

STANDARD ATLAS
OF

BURLEIGH COUNTY
NORTH DAKOTA

INCLUDING
A PLAT BOOK

OF THE
VILLAGES, CITIES AND TOWNSHIPS OF THE COUNTY.

MAP OF THE STATE, UNITED STATES AND WORLD.

Patrons Directory, Reference Business Directory and Departments
devoted to General Information.

ANALYSIS OF THE SYSTEM OF U.S. LAND SURVEYS, DIGEST OF THE
SYSTEM OF CIVIL GOVERNMENT, ETC. ETC.

Compiled and Published

BY

GEO. A. OGLE & Co.

PUBLISHERS & ENGRAVERS.

CHICAGO.

1912

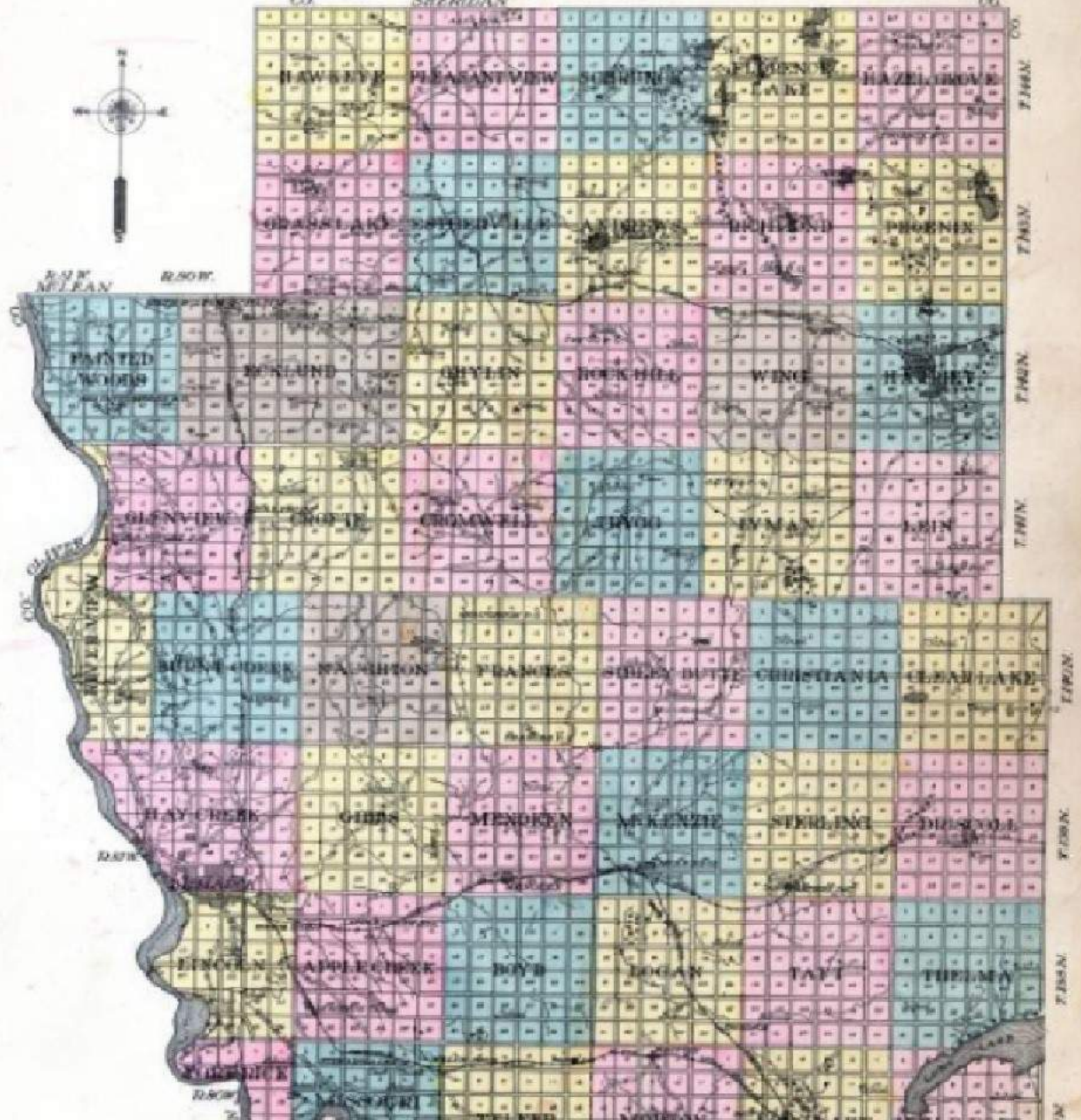
BURLEIGH COUNTY

NORTH DAKOTA

Copyright 1917 by Geo. A. Ogle & Co.

Scale of 40 miles to 1 inch

R. 75 W. R. 76 W. R. 77 W. R. 78 W. R. 79 W.

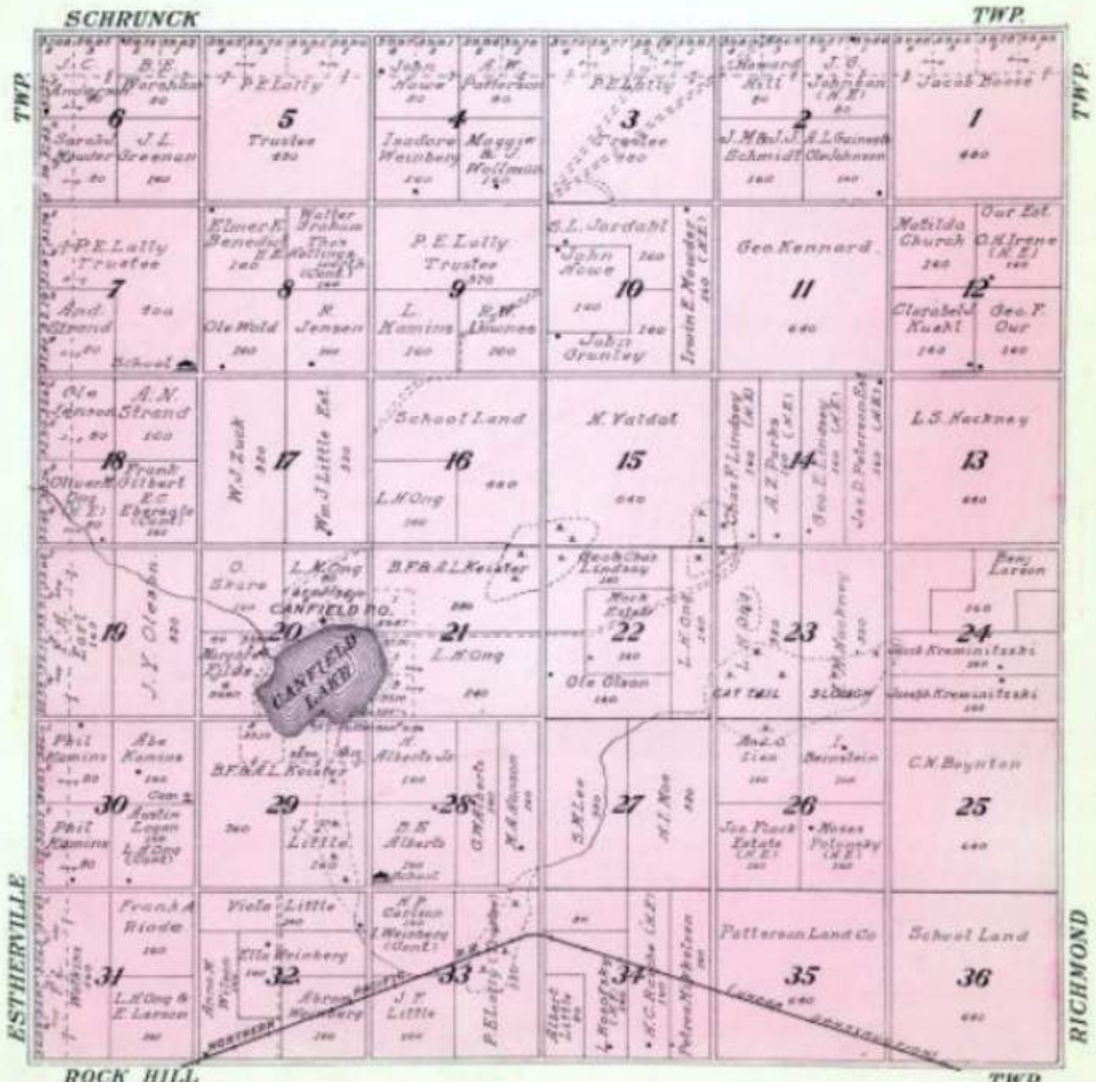


ANDREWS

TOWNSHIP

Scale 1/4 inches to 1 mile

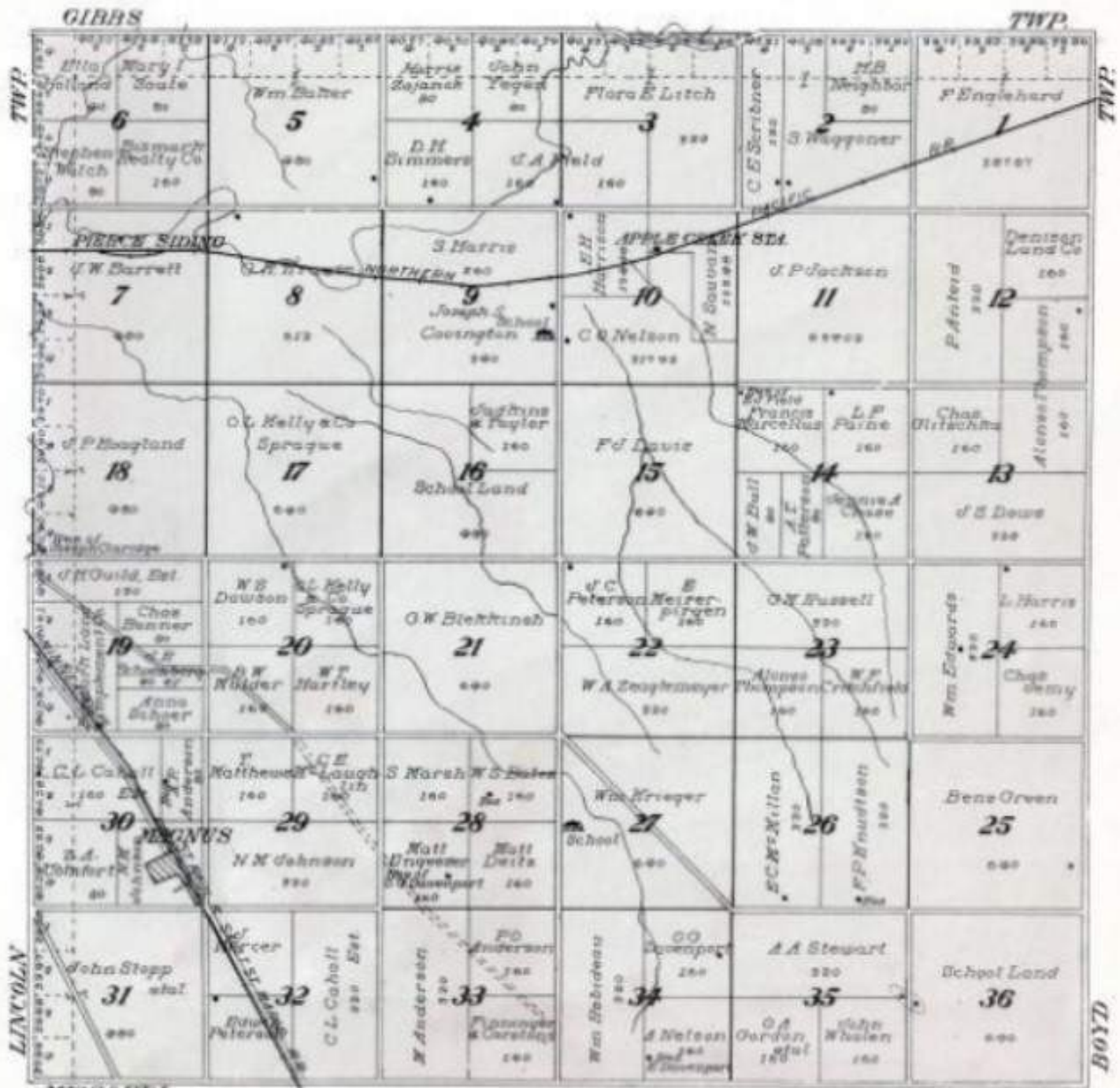
Township 143 North, Range 77 West of the 8th P. M.



MAP OF APPLE CREEK TOWNSHIP

Scale 1/2 inch to 1 mile

Township 188 North, Range 19 West of the 6th P. M.

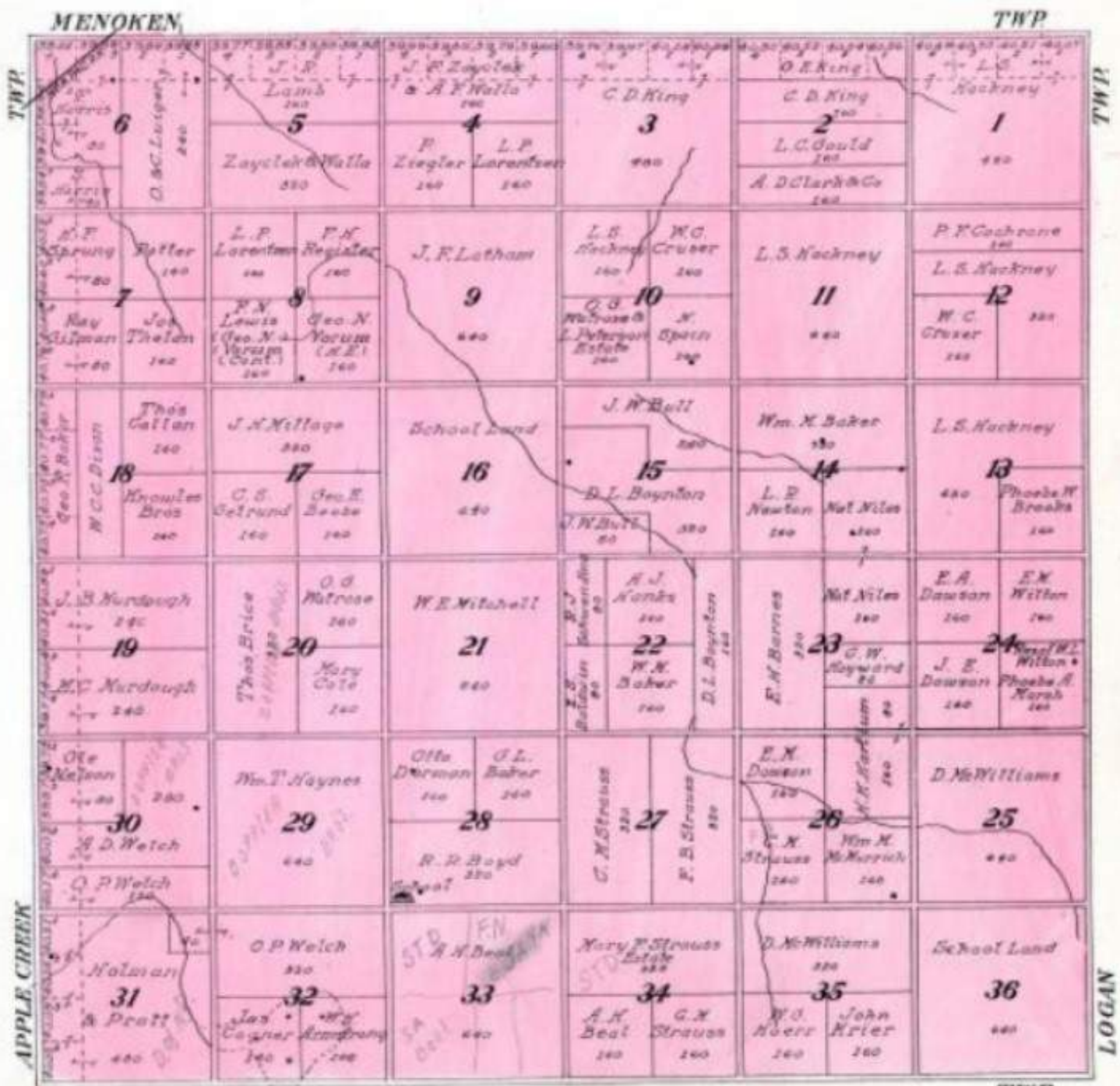


BOYD

TOWNSHIP

Scale 1/4 inch to 1 mile

Township 138 North, Range 78 West of the 5th P. M.

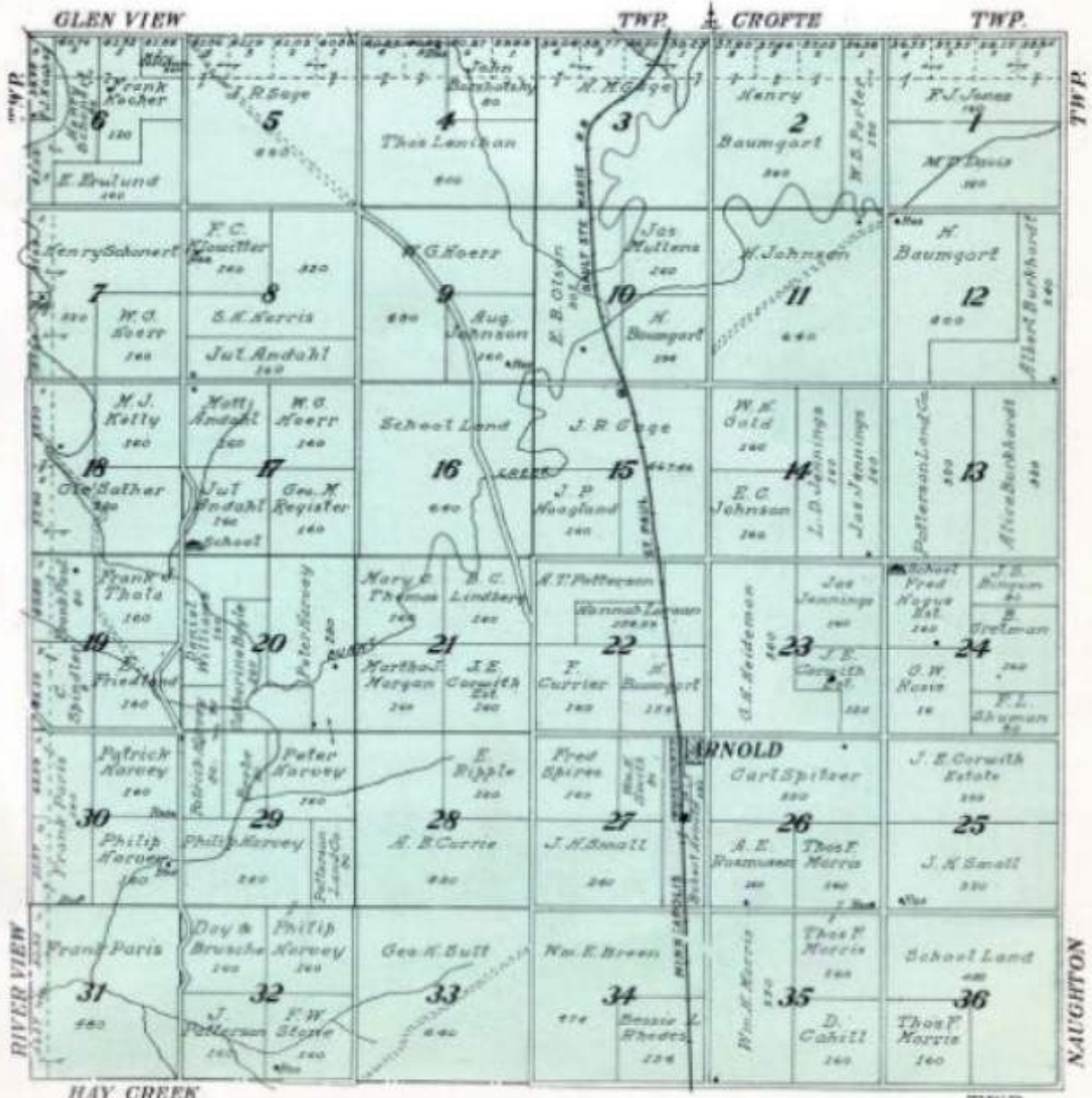


BURNT CREEK

TOWNSHIP

Scale 1/4 inch to 1 mile

Township 140 North, Range 80 West of the 5th P. M.



MAP OF CHRISTIANIA TOWNSHIP

Scale 1/4 section to 1 mile

Township 140 North, Range 76 West of the 6th P. M.

	LYMAN	TWP. 1 LEIN				TWP. 2
TWP. 1	6 Alex. Peterson Fred. Foster 100	5 Wm. Henshew 200	4 H. N. P. L. Rogers 100	3 H. N. P. L. Rogers 100	2 John Olson 100	1 C. N. Boynton 100
	7 T. Robinson 200	8 V. C. Savage 100	9 C. N. Boynton 400	10 Geo. Harding 100	11 E. D. Rogers 100	12 Robert Sharp 100
	18 V. P. Nash 100	17 J. H. West 400	16 School Land 400	15 Wm. Hoerr 100	14 L. Stullerston 100	13 J. H. Draper 100
	19 School Land 400	20 L. N. Boynton 100	21 H. F. Montgomery 100	22 H. M. Hoerr 100	23 H. P. Prosser 100	24 E. Bushman 100
	30 Paul E. Hansen 100	29 T. C. Bailey 100	28 K. N. Anderson 100	27 Wm. Hoerr 100	26 H. D. Duddy 100	25 Wm. Albert 100
SIBLEY BUTTE	31 Wm. Hoerr 100	32 Wm. Hoerr 100	33 Wm. Hoerr 100	34 Wm. Hoerr 100	35 Wm. Hoerr 100	36 School Land 400

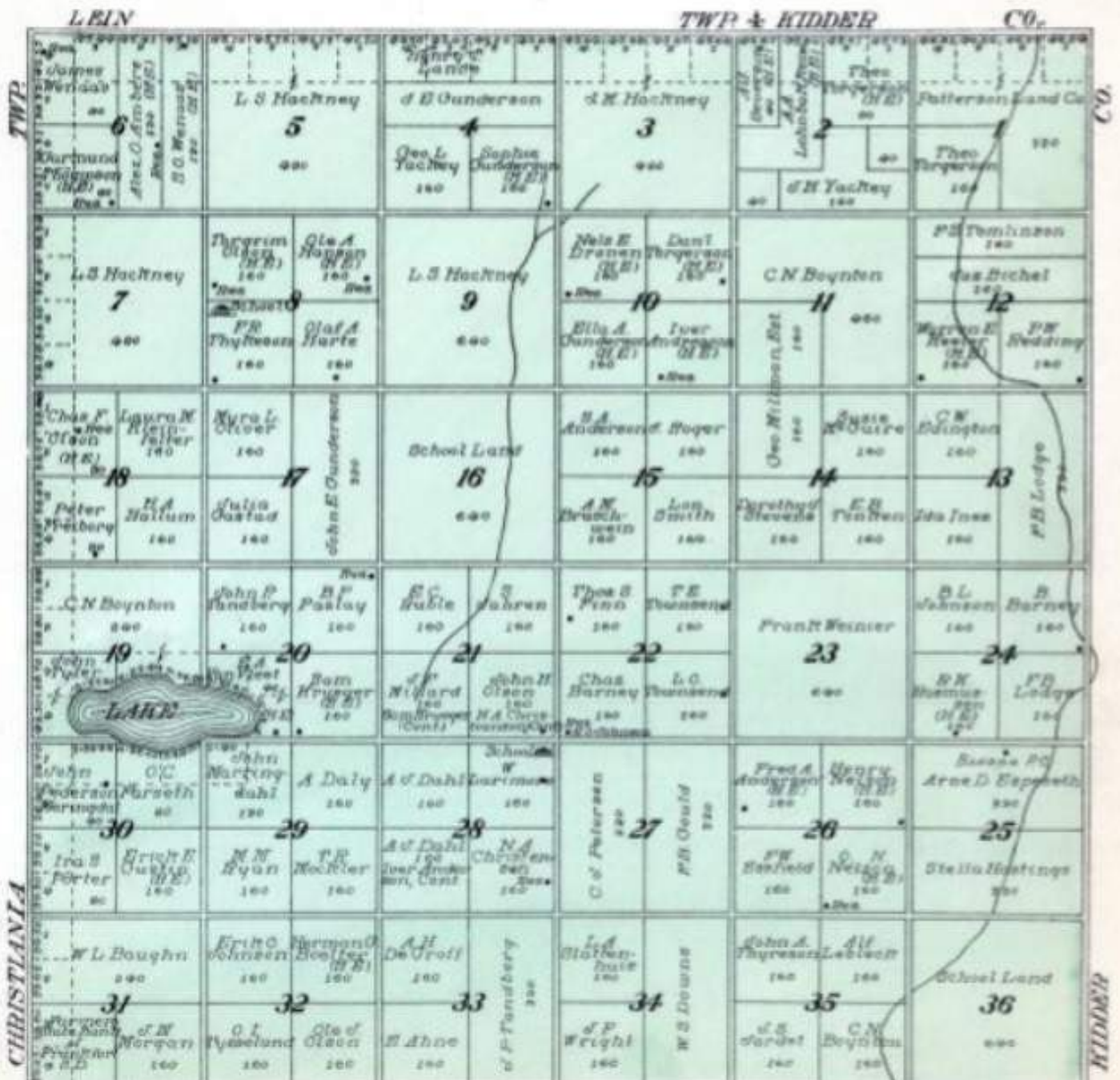
SPRING

1914

MAP OF CLEAR LAKE TOWNSHIP

Scale 1/4 inch to 1 mile

Township 140 North, Range 74 West of the 5th P. M.



CROMWELL

TOWNSHIP

Scale 1/4 inch to 1 mile

Township 141 North, Range 76 West of the 1st P. M.



MAP OF DRISCOLL TOWNSHIP

Scale 1/4 inch to 1 mile

Township 129 North, Range 75 West of the 6th P. M.

CLEAR LAKE

TWP

TWP

CO.

6 E. C. Carr 80 Joseph Root 80		5 O. L. Spivey 80 S. F. Mathews 160 H. W. Miller 80 E. N. Jacobson 320		4 E. Thompson 80 E. D. Woodruff 160		3 Stary N. Wiley 80 F. K. Webb 160		2 N. Olson 80 Fred Dittenban 160 J. C. Loerch 240		1 L. E. Della 80 R. H. Hart 80 A. B. Burgess 160 A. Larson 160	
7 J. R. Ogarty 80 Henry Caband 80		8 Arthur Duan 80 H. K. Jackson 160 Henry Wilson 80 Fred Dittenban 160 D. S. Bellaway 80 J. E. Jansen 80 J. W. Delaney 80		9 N. A. Quale 80		10 H. P. Hanson 160 C. Parlman 160		11 A. N. Bruchschwein 80 A. Thastenson 160		12 E. C. Ruble 160 H. A. Thomas 160 H. Beckwith 160 E. C. Ruble 160	
16 W. A. Rhodes 80 Mary Sawyer 80		17 F. A. S. S. S. S. 80 S. W. Noylan 160 Henry Stone 80 J. J. Dorsey 160 Frank Williams 160		18 School Land 240 D. B. Olson 80 H. P. Hanson 80		15 H. P. Hanson 80		14 F. J. Brown 160 G. N. K. J. Henry 160 Lansley Wiemar 160		13 G. G. Straun 80	
19 Lois Barber 80 L. S. Knickney 80		20 S. B. Anderson 80 L. S. Knickney 160 E. A. M. M. M. 80 L. A. Kruland 80		21 H. Phelps 160 C. P. Drexler 160		22 N. H. DeBrott 160 H. P. Carroll 160 H. C. Tellefsen 160 N. E. Wilcox 160		23 N. K. H. S. S. 160 I. P. Johnson Con. L. 160 A. Edwards 160		24 N. K. H. S. S. 160 I. P. Johnson 160 J. E. Johns 160 J. E. Johns 160 G. N. Rice 80 N. H. Finseth 80	
30 H. A. Meier 80 C. T. Hale 80		29 J. A. Garrison 80 J. B. Mansfeld 80 J. C. Mallum 160 O. W. Swensa 160 O. J. Reno 160 Mackloch Baughn 160		28 Thos. McFiltrick 160 J. J. Jenson 160		27 C. A. Swanson 160 L. Swanson 160 J. P. Miller 160		26 P. F. Wilcox Jr. 160 Lettie D. Burgess 160 George Bell 160 Katie A. Colton 160		25 T. S. Robertson 160 Isabelle Knutson 160	
31 J. J. Calmes 80 Herman Huber 80		32 A. C. Jordan 160 Jas. Fricklin 160 H. H. Rice 160 T. E. Harleman 160 A. J. Young 160		33 T. E. Harleman 160 John Gaultbury 160 O. K. Rund 160 E. C. Darnell 160		34 C. E. Dupont 160 E. A. Null 160 G. L. Gustafson 160 H. P. Langley 160		35 C. E. Crozier 80		36 School Land 80	

STERLING

KIDDER

TWP

ECKLUND

TOWNSHIP

Scale 1/4 inch to 1 mile

Township 142 North, Range 79 West and Part of Township 142 North, Range 80 West of the 4th P. M.

	McLEAN	SOUTH WILTON	CO. 1 GRASS LAKE	R 79 W	R 80 W	TWP.
TWP.						TWP.
T 142 N						T 142 N
PAINTED WOODS						GHYLIN
GLEN VIEW						TWP.
						TWP.

TWP. 1 CROFTE

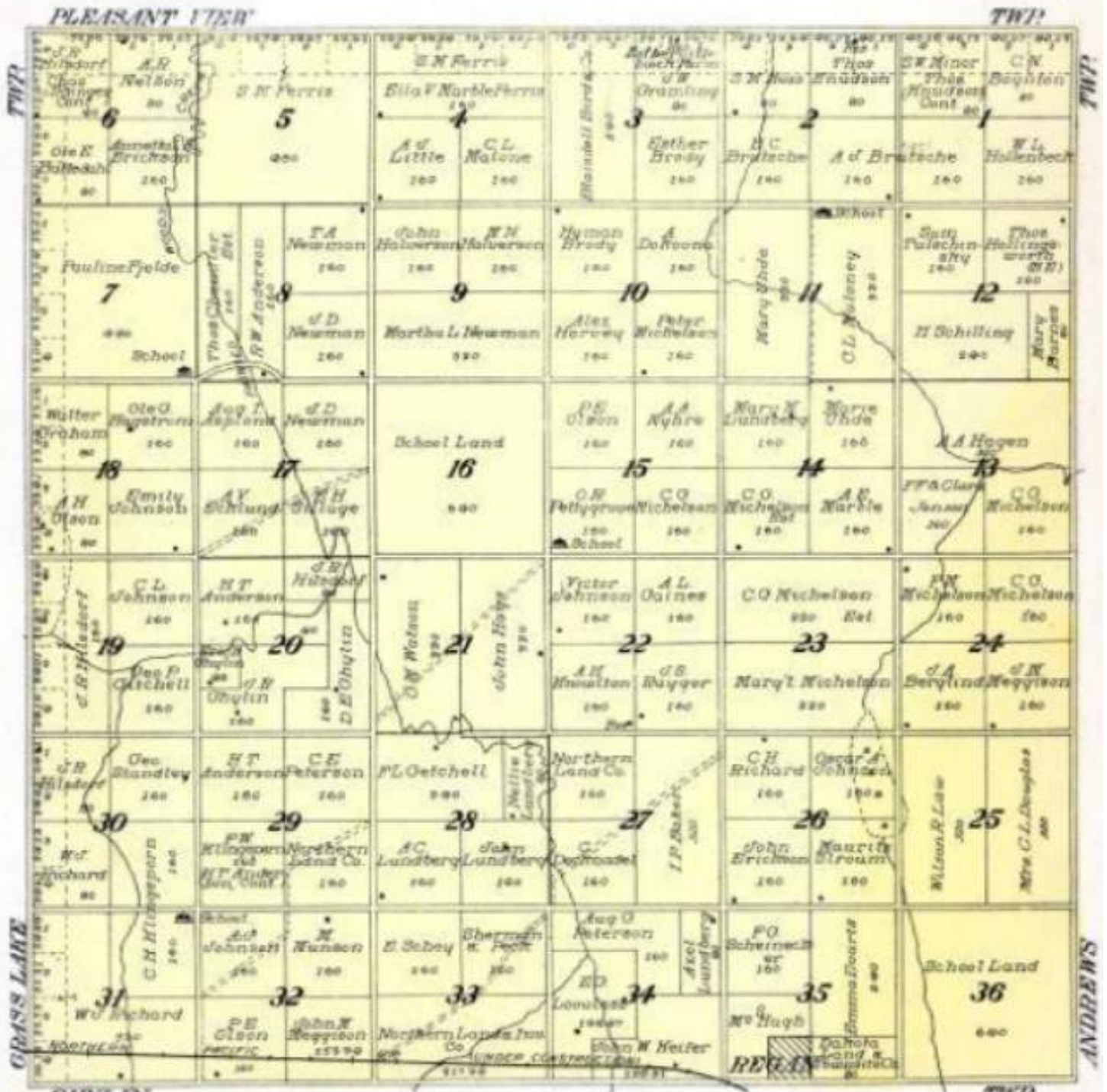
TWP.

ESTHERVILLE

TOWNSHIP

Scale 1/4 inch to 1 mile

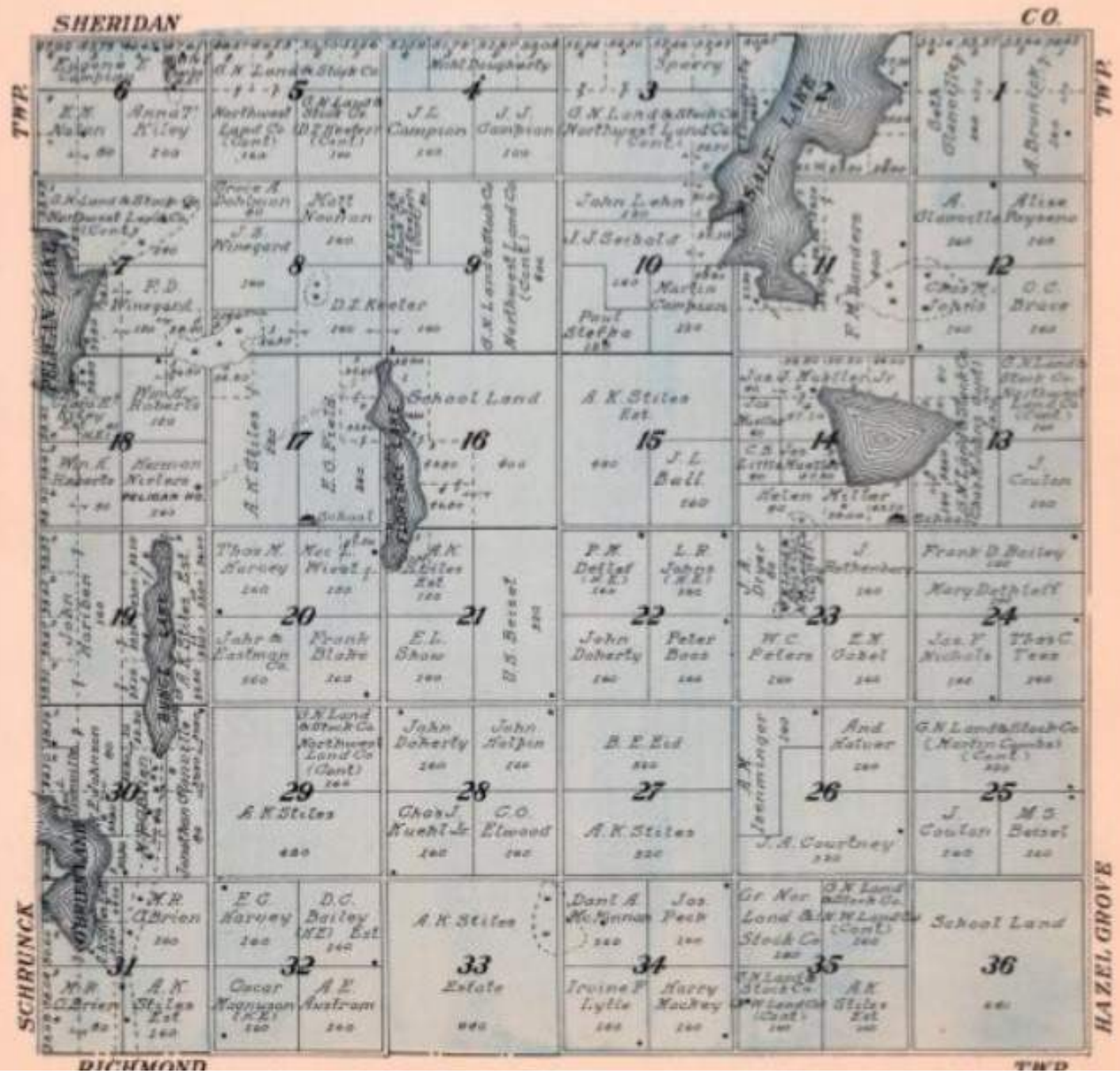
Township 143 North, Range 78 West of the 6th P. M.



MAP OF FLORENCE LAKE TOWNSHIP

Scale 1 1/2 inches to 1 mile

Township 144 North, Range 76 West of the 6th P. M.

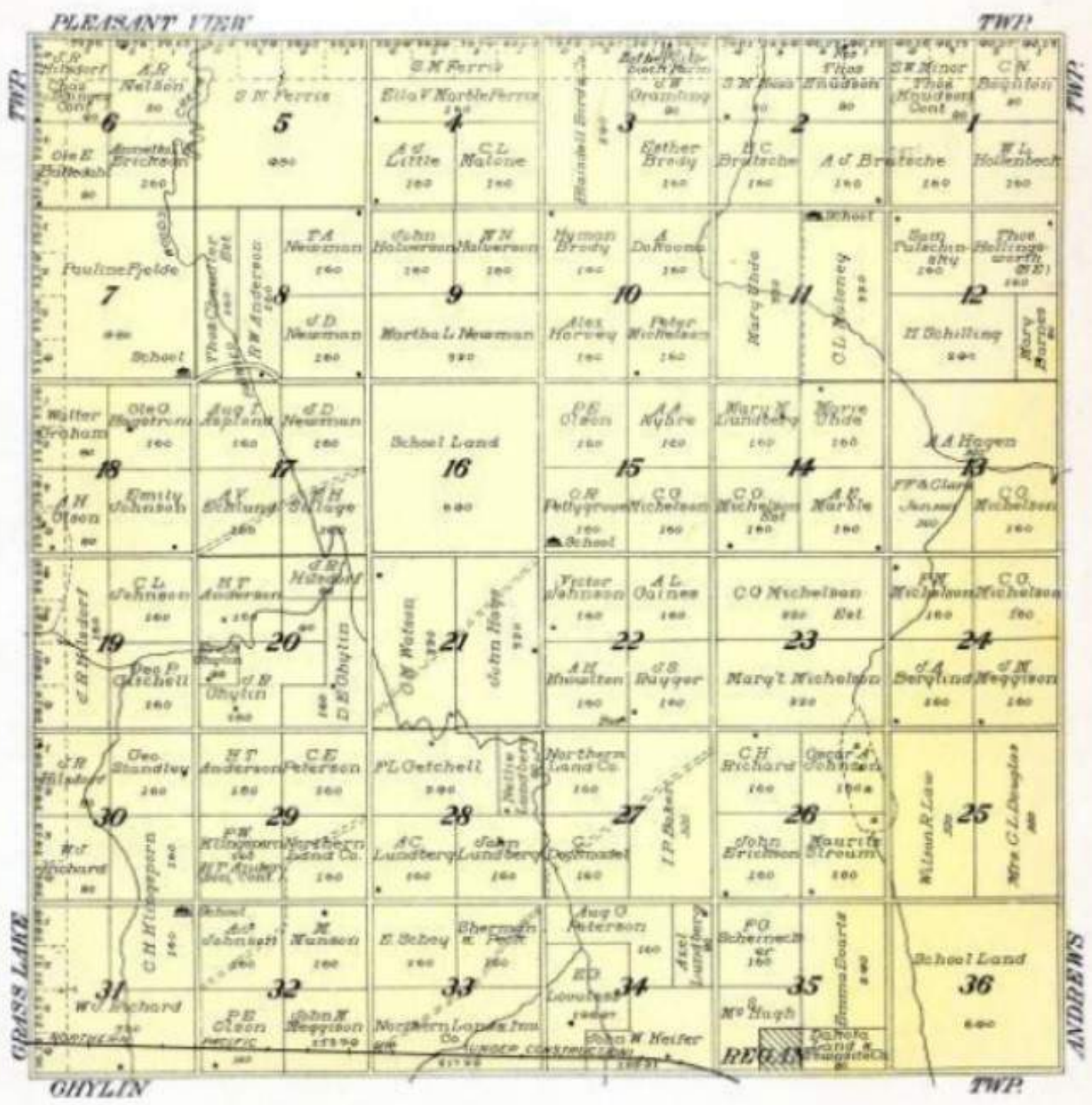


ESTHERVILLE

TOWNSHIP

Scale 1/4 inch to 1 mile

Township 143 North Range 78 West of the 5th P. M.



FLORENCE LAKE

TOWNSHIP

Scale 1/4 inch to 1 mile

Township 144 North, Range 76 West of the 8th P. M.

SHERIDAN

CO.



TWP.

TWP.

SCHRUNCK

HAZEL GROVE

FRANCES

TOWNSHIP

Scale 1 1/2 inches to 1 mile

Township 140 North, Range 18 West of the 6th P. M.

	CROWWELL	TWP. 4 TBYGO				TWP.
TWP.	6 W. O. Hoerr Emma Sigerson H. Roman 100 100 100	5 C. N. Boynton L. A. Adams 100 100	4 H. Roman 100	3 Carensa Pennington 400	2 Carensa Pennington 400	1 W. O. Hoerr 100 W. O. Hoerr 100
	7 Alfred Nyberg Sarah Brutsen 100 100	8 C. N. Boynton H. P. Hanson 100 100	9 Patterson Land Co. C. Sampson 100	10 Walter DeLisman John A. Olson 100 100	11 Carensa Pennington L. A. Gallagher 100 100	12 O. G. Ganes W. O. Hoerr 100 100
	18 Fred Nyberg C. U. Anderson 100 100	17 C. N. Boynton 400	16 School Land 400	15 Patterson Land Co. D. L. Boynton 100 100	14 Ed. Goldbell Cath. Boyte 100	13 Wm. Adams D. L. Boynton 100 100
	19 Paul Winters Patterson Land Co. 100 100	20 Ed. Harnes John Harnes 100 100	21 W. O. Hoerr 400	22 Ed. Nyberg E. L. Patterson 100 100	23 C. C. Sulace 400	24 Frank Bestenlehner O. E. Norton John H. Shoble 100 100 100
	30 Wm. N. Curmish Sr. 400	29 Patterson Land Co. Cloughs Trudersfeld 100 100	28 F. G. Land Co. Clara Lemire 100 100	27 Cloughs Trudersfeld J. P. Hoagland 100 100	26 E. Diezman Walter Diezman 100 100	25 Wm. H. E. Whipple J. A. Biddle 100 100
NAUGHTON	31 C. O. Johnson Patterson Land Co. 100 100	32 A. Schoen John Curmish C. V. Damsen 100 100 100	33 Cloughs Trudersfeld Wm. Hood 100 100	34 Security Co. J. P. Hoagland Frances P.O. N. T. Strauss 100 100 100 100	35 J. P. Hoagland J. P. Hoagland 100 100	36 School Land 400

GHYLIN

TOWNSHIP

Scale 1/4 inch to 1 mile

Township 142 North, Range 78 West of the 5th P. M.



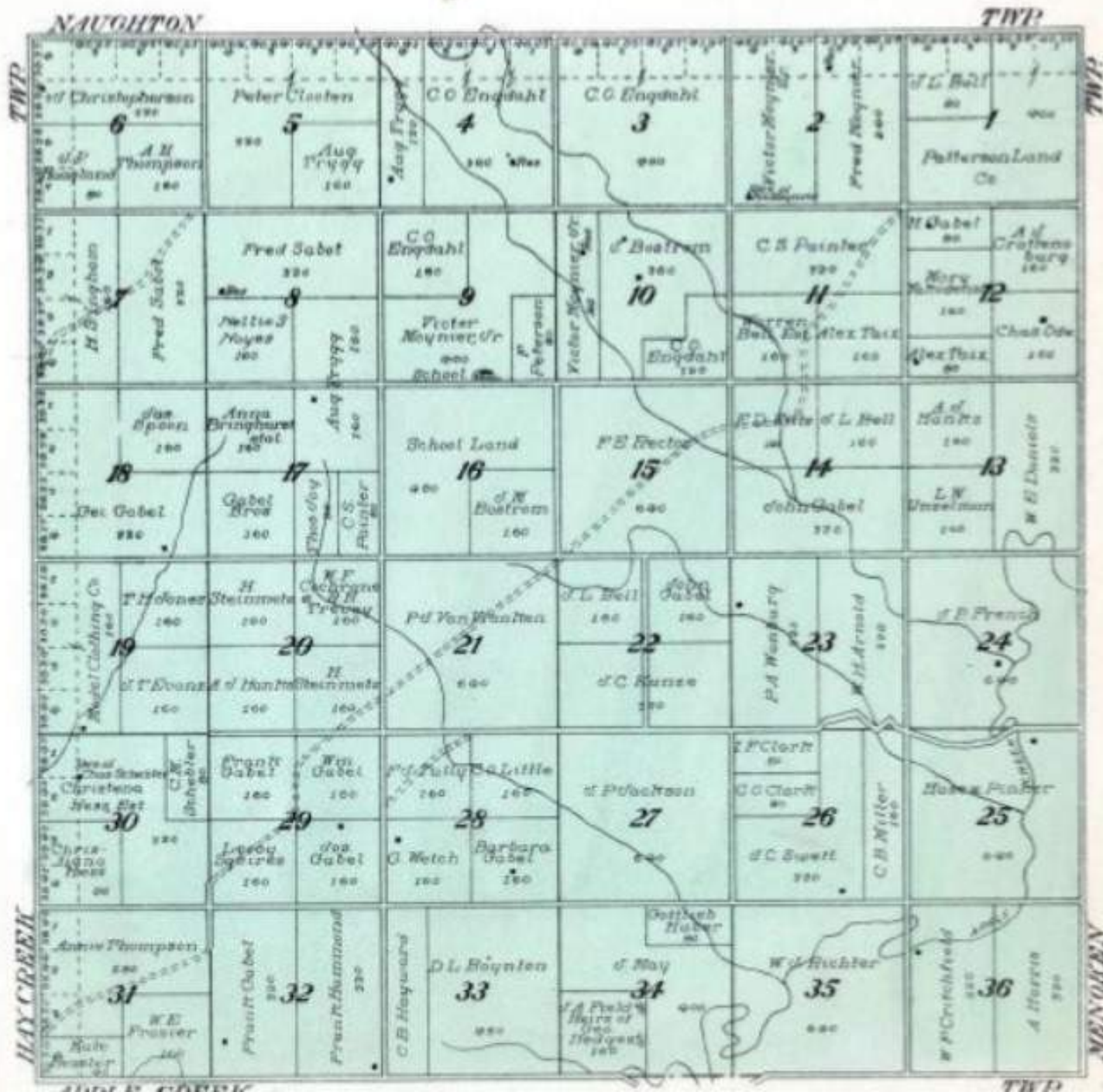


GIBBS

TOWNSHIP

Scale 1/4 inch to 1 mile

Township 129 North, Range 79 West of the 6th P. M.



GLENVIEW

TOWNSHIP

Scale 1 1/4 inches to 1 mile

Part of Township 141 North, Range 80 West of the 6th P. M.



GRASS LAKE

TOWNSHIP

Scale 1 1/2 inches to 1 mile

Township 148 North, Range 79 West of the 5th P. M.

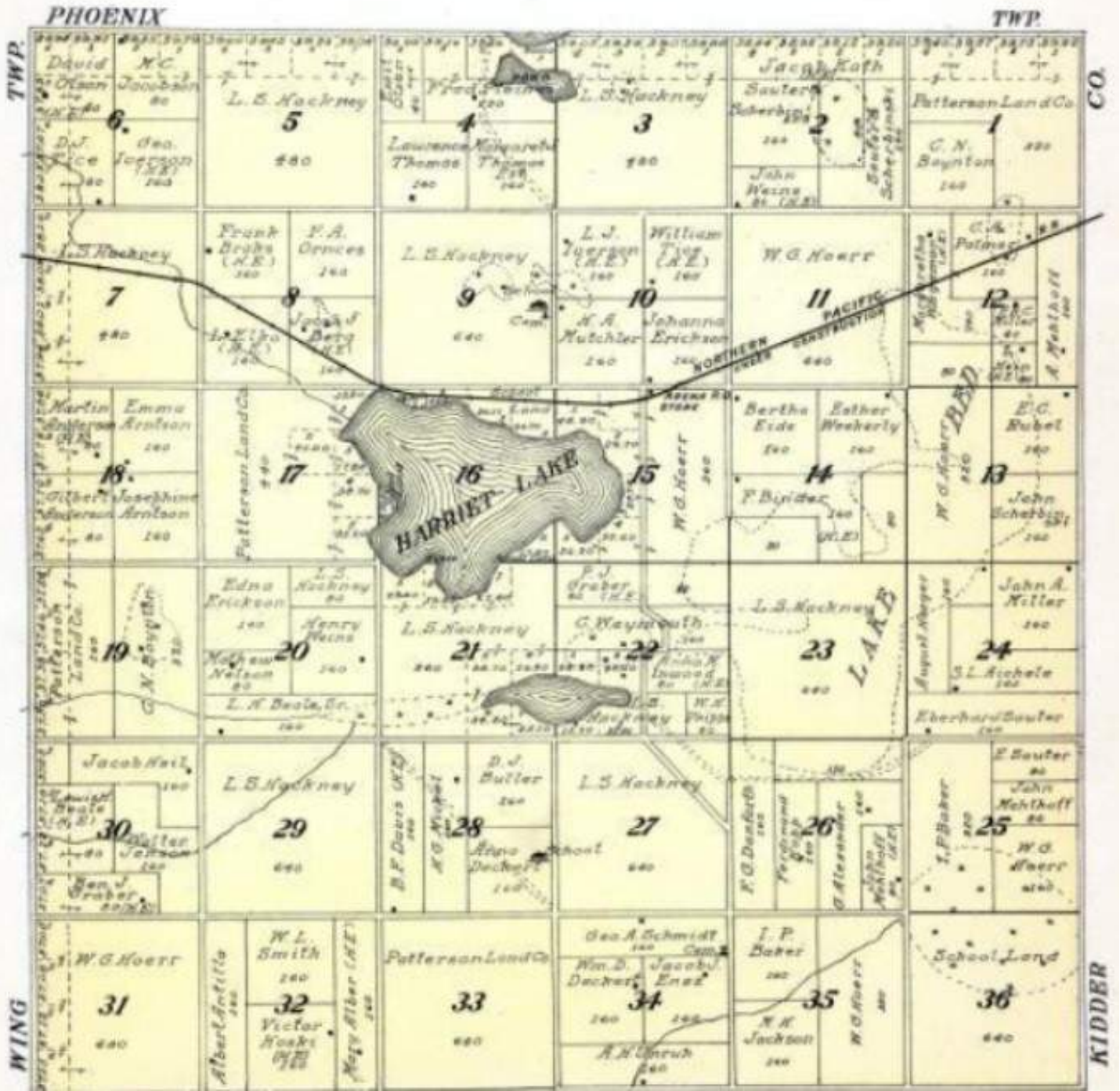


HARRIET

TOWNSHIP

Scale 1/4 inch to 1 mile

Township 142 North, Range 78 West of the 5th P. M.

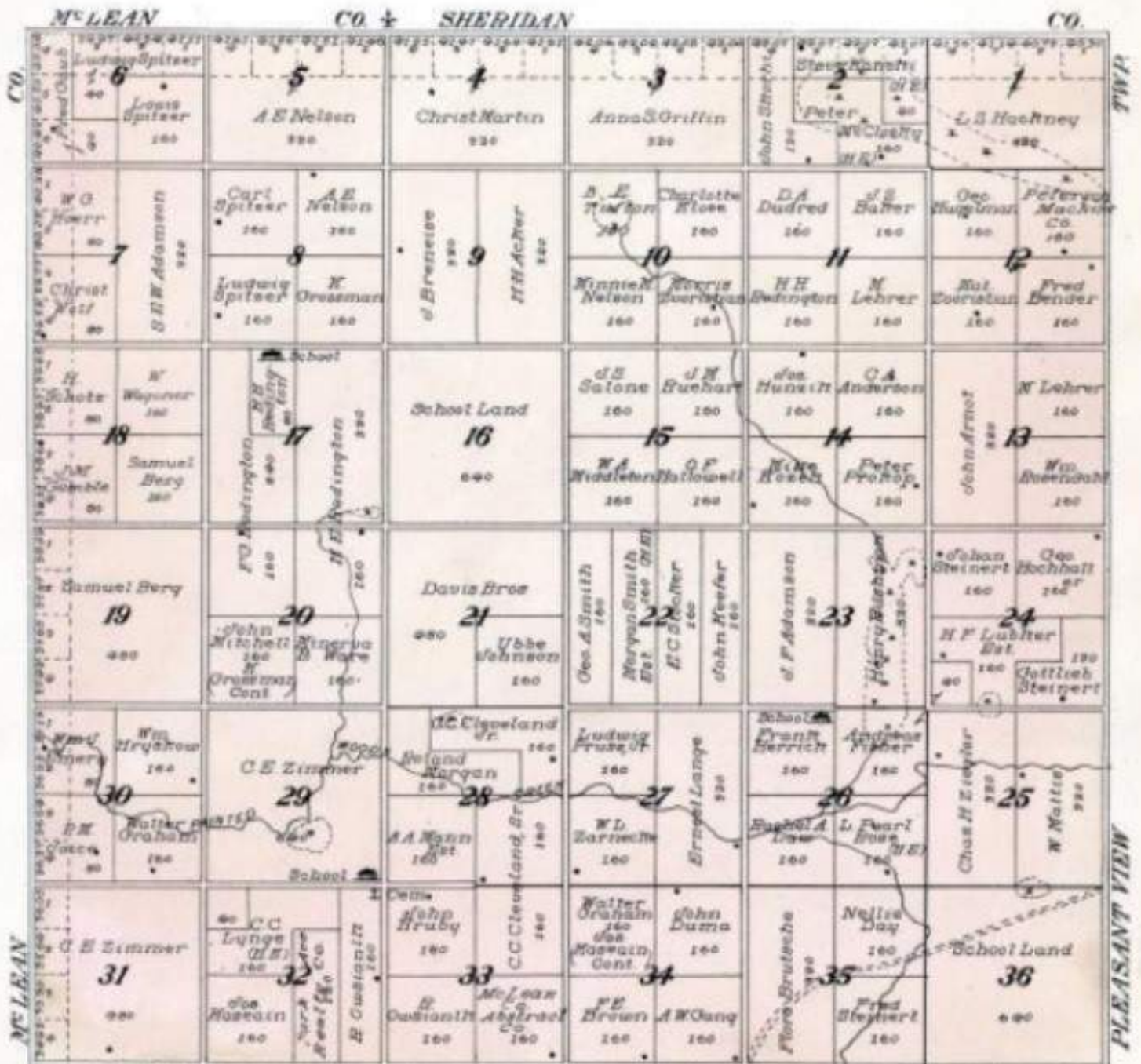


HAWKEYE

TOWNSHIP

Each 1 1/4 inches to 1 mile

Township 144 North, Range 79 West of the 5th P. M.



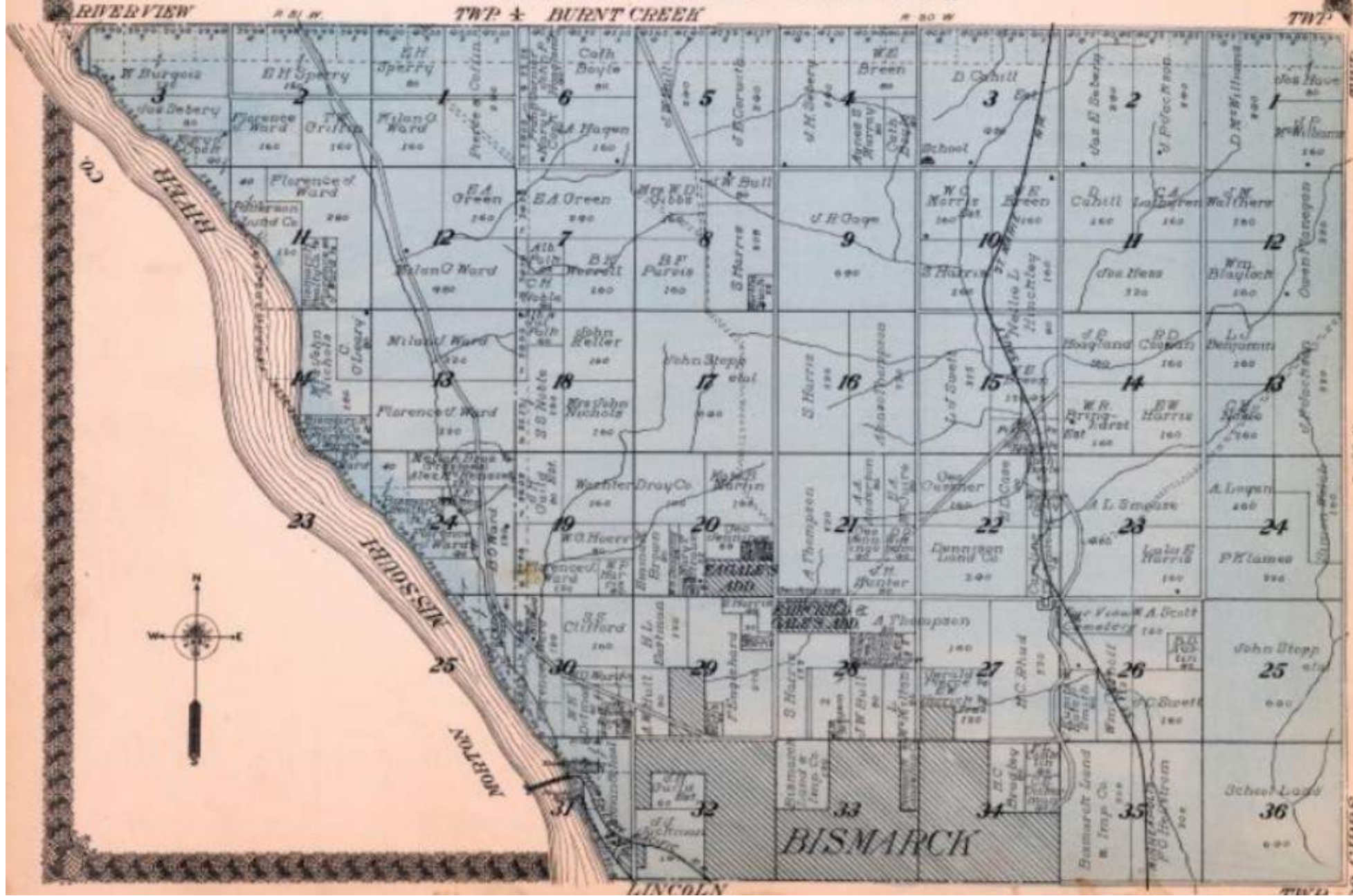
HAY CREEK

TOWNSHIP

Scale 1/2 inch to 1 mile

Part of Township 139 North, Ranges 80 and 81 West of the 8th P. M.

TWP 4 BURNT CREEK



TWP 7

T. 139 N.

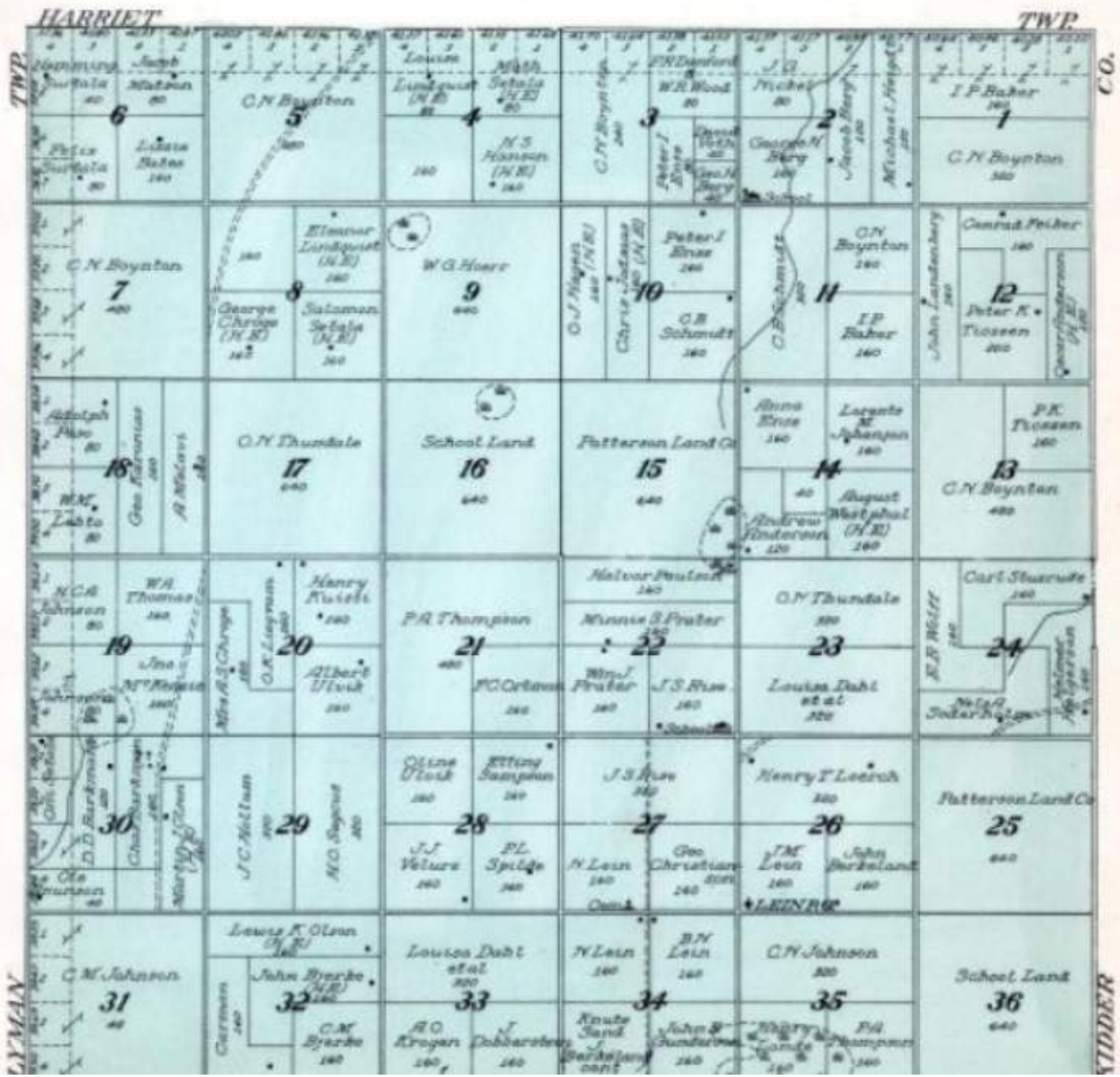
S. GIBBS

LEIN

TOWNSHIP

Scale 1/4 inch to 1 mile

Township 141 North, Range 75 West of the 5th P. M.

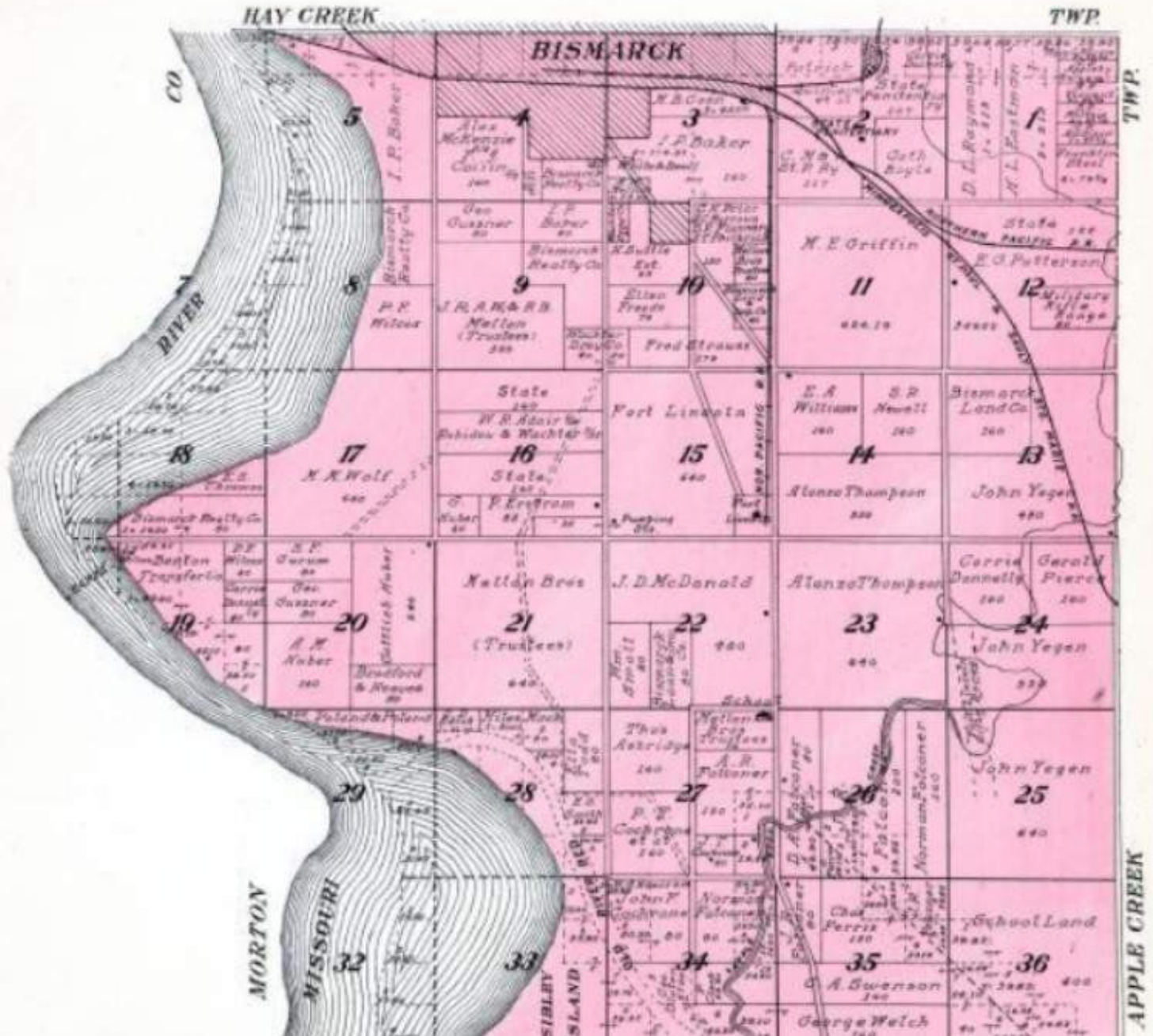


LINCOLN

TOWNSHIP

Scale 1 1/2 inches to 1 mile

Part of Township 188 North, Range 80 and 81 West of the 5th P. M.



LOGAN

TOWNSHIP

Scale 1/4 inch to 1 mile

Township 135 North, Range 77 West of the 5th P. M.

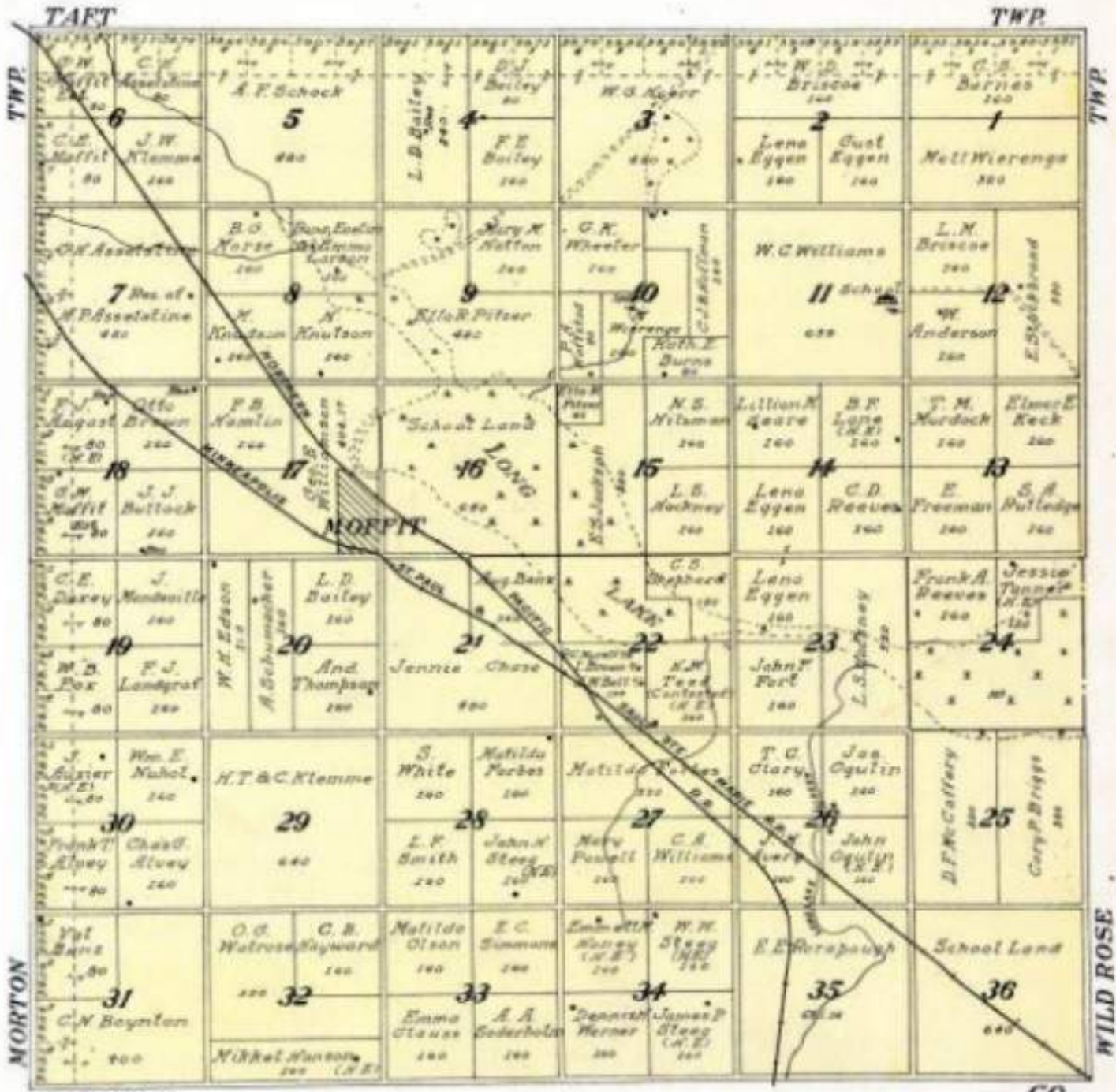


LONG LAKE

TOWNSHIP

Scale 1/4 inch to 1 mile

Township 137 North, Range 76 West of the 5th P. M.



LYMAN

TOWNSHIP

Scale 1 1/2 inches to 1 mile

Township 141 North, Range 76 West of the 5th P. M.



McKENZIE

TOWNSHIP

Scale 1/4 inch to 1 mile

Township 189 North, Range 77 West of the 5th P. M.

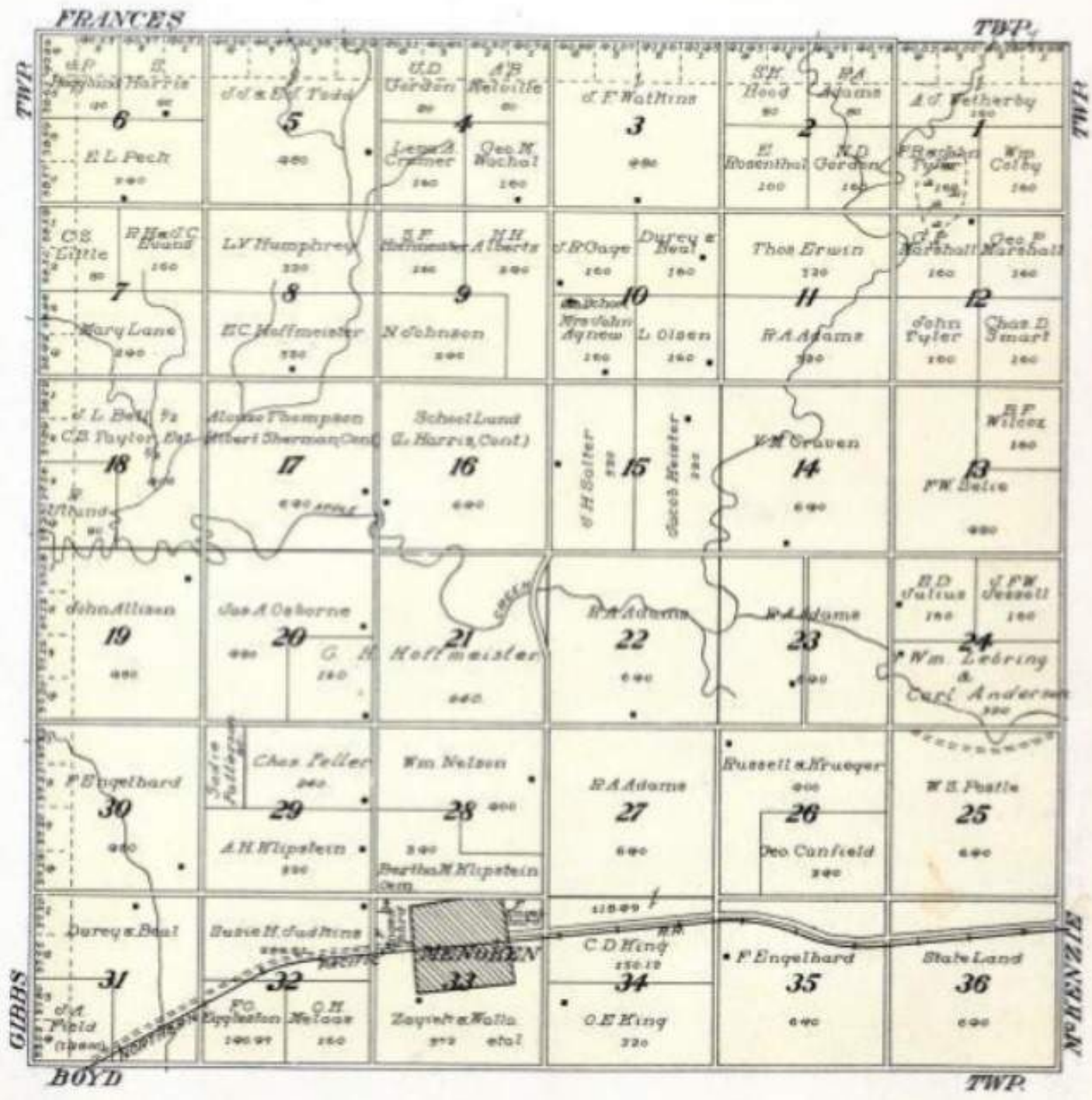


MENOKEN

TOWNSHIP

Scale 1 1/2 inches to 1 mile

Township 129 North, Range 78 West of the 4th P. M.



MISSOURI

TOWNSHIP

Each 36 sections to 1 mile

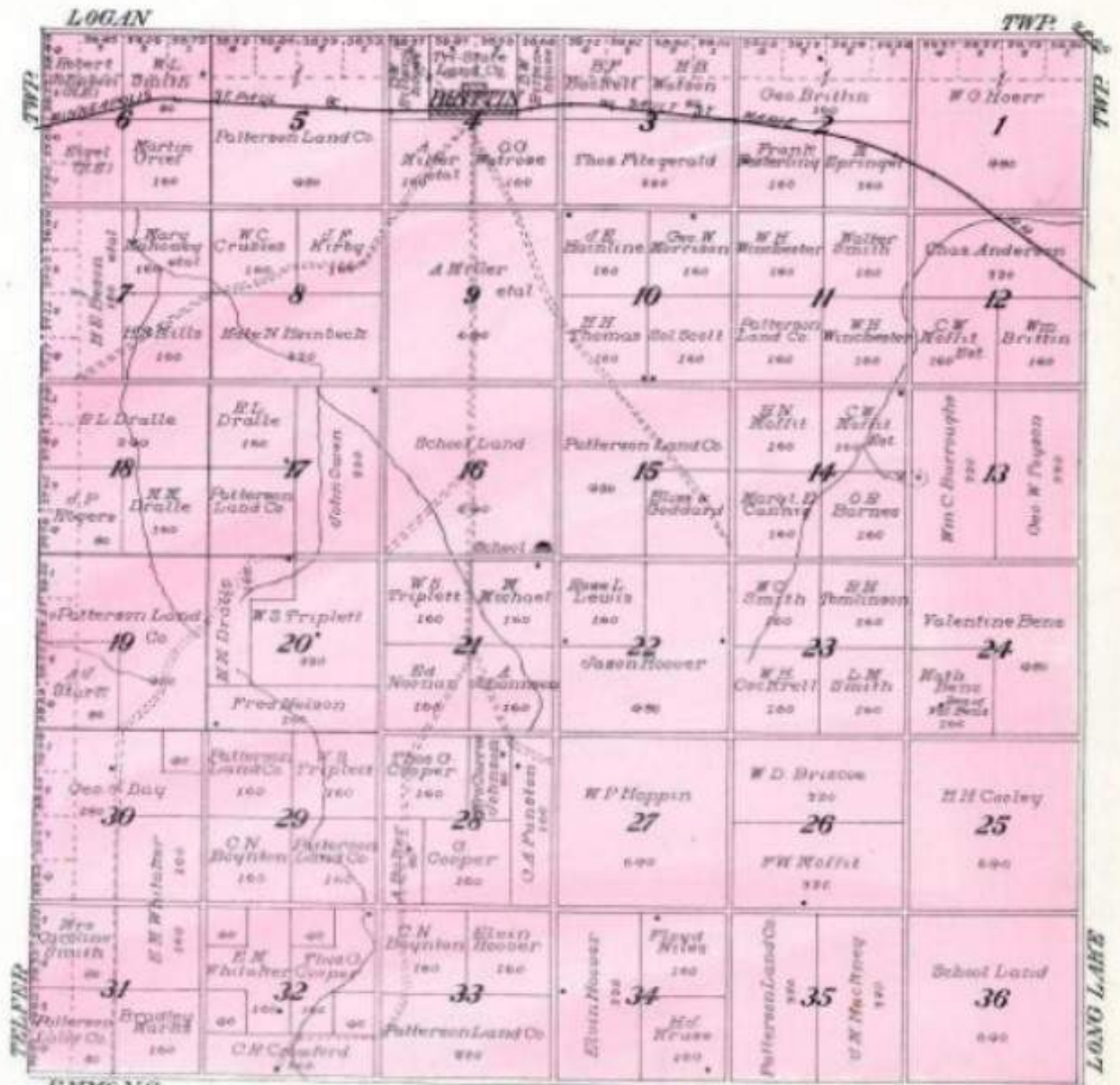
Part of Township 137 North, Range 79 West of the 8th P. M.



MAP OF MORTON TOWNSHIP

Scale 1/4 inches to 1 mile

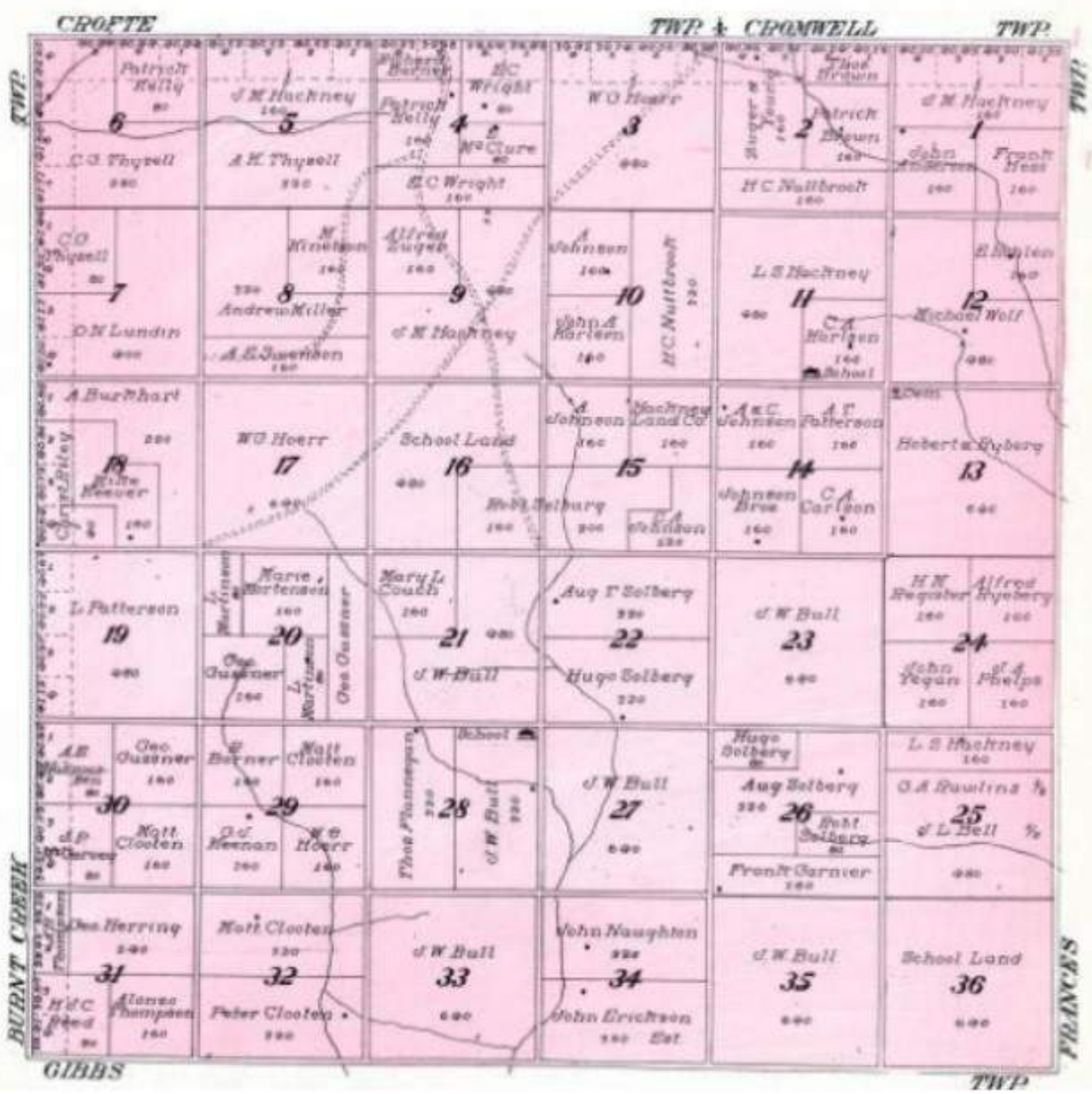
Township 187 North, Range 77 West of the 5th P. M.



MAP OF NAUGHTON TOWNSHIP

Scale 1/4 inch to 1 mile

Township 140 North, Range 79 West of the 5th P. M.



PAINTED WOODS

TOWNSHIP

Scale 1/4 inch to 1 mile

Part of Township 142 North, Ranges 80 and 81 West of the 5th S. R.

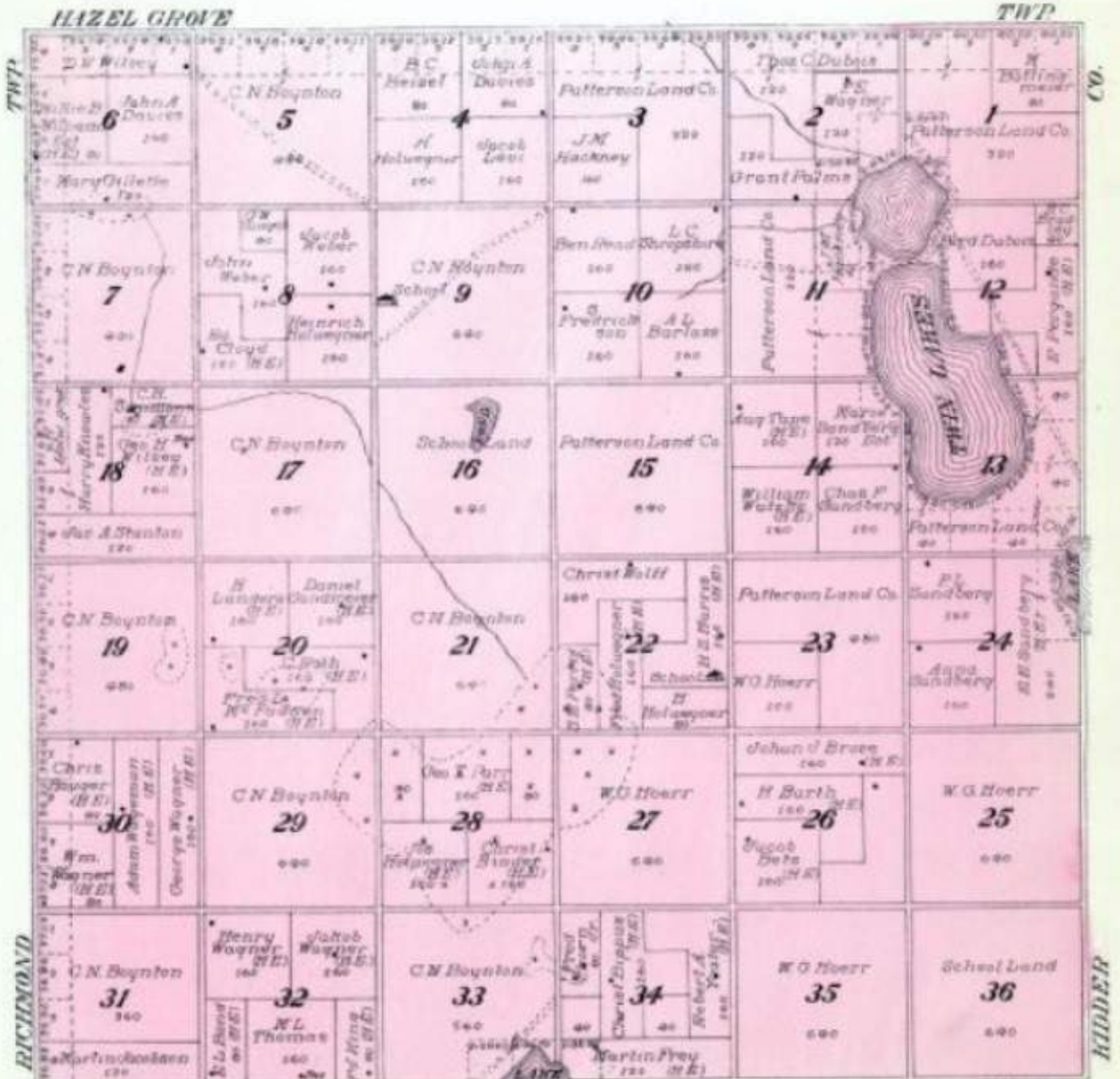


PHOENIX

TOWNSHIP

Scale 1/4 inch to 1 mile

Township 14 S North, Range 7 S West of the 5th P. M.



PLEASANT VIEW

TOWNSHIP

Scale 1 1/2 inches to 1 mile

Township 144 North, Range 78 West of the 5th P. M.

SHERIDAN		CO.	
TWP.	6	5	4
	Edw. Adams (N.E.) 120	J. N. Hockney 220	Edw. Anderson (N.E.) 120
	Wm. Anderson 120	John Anderson 120	J. C. Hollum 220
	Basile Garrell 120	Thos. A. Wade 120	C. N. Boynton 220
	7	8	9
	C. N. Boynton 220	H. S. Tague 240	C. N. Boynton 220
18	17	16	
N. W. Healy Co. 120	J. C. Hollum 220	School Land 220	
19	20	21	
J. C. Hollum 220	W. C. Steiber 220	J. C. Hollum 220	
30	29	28	
J. C. Hollum 220	J. C. Hollum 220	Michael Heiden (N.E.) 120	
31	32	33	
Van Holand 240	J. C. Olson 240	A. N. Blexude 240	
C. N. Boynton 240	Marlin Minson 240	Pauline Johnson 240	
34	35	36	
J. W. Register 240	School Land 240	School Land 240	
J. N. Register 240			

HAWKEYE

TWP.

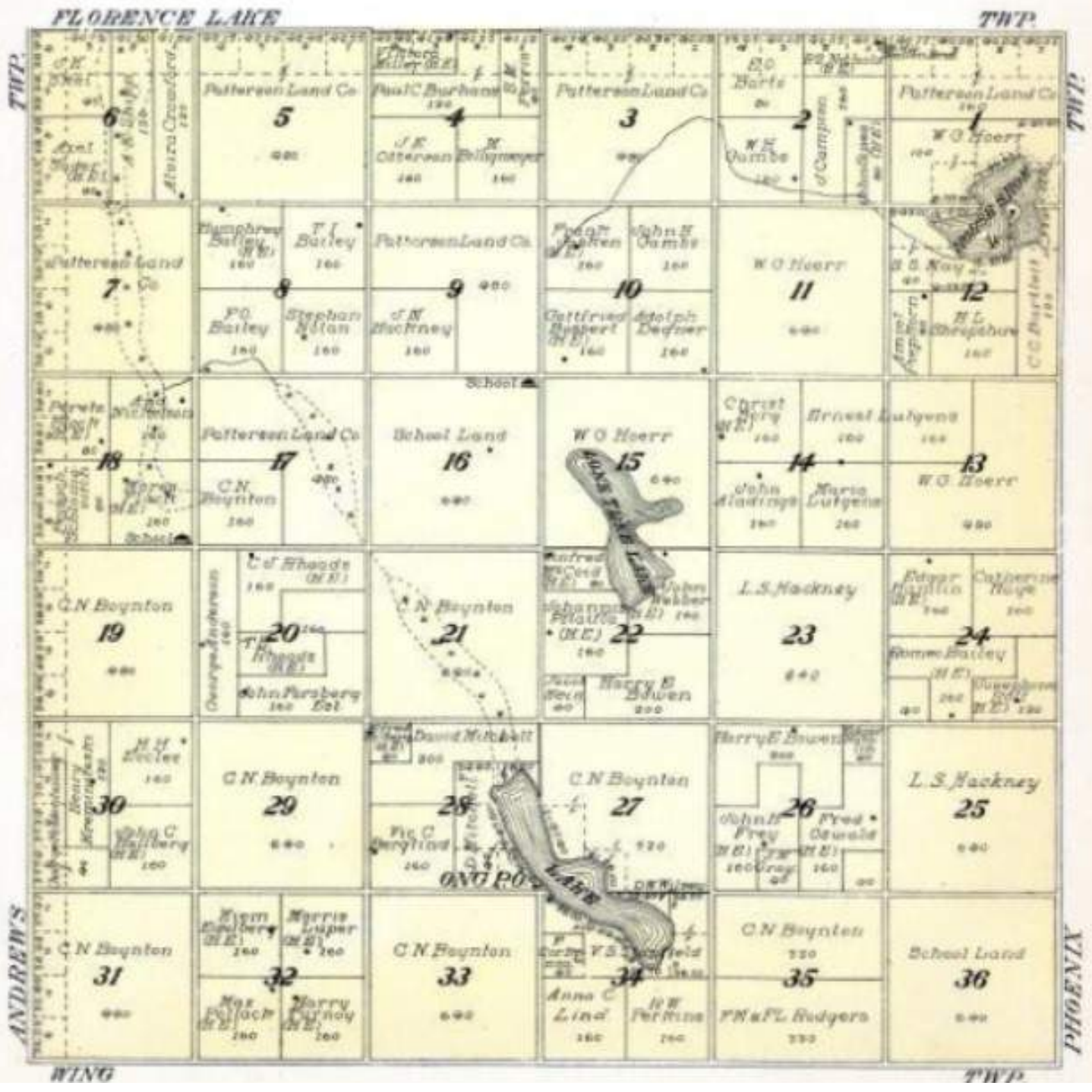
SCHIRUNCK

RICHMOND

TOWNSHIP

From 17 1/2 miles to 1 mile

Township 148 North, Range 76 West of the 5th P. M.



MAP OF ROCK HILL TOWNSHIP

Scale 1/4" equal to 1 mile

Township 142 North, Range 77 West of the 8th P. M.



SCHRUNCK

TOWNSHIP

Scale 1/4 inches to 1 mile

Township 144 North, Range 77 West of the 5th P. M.

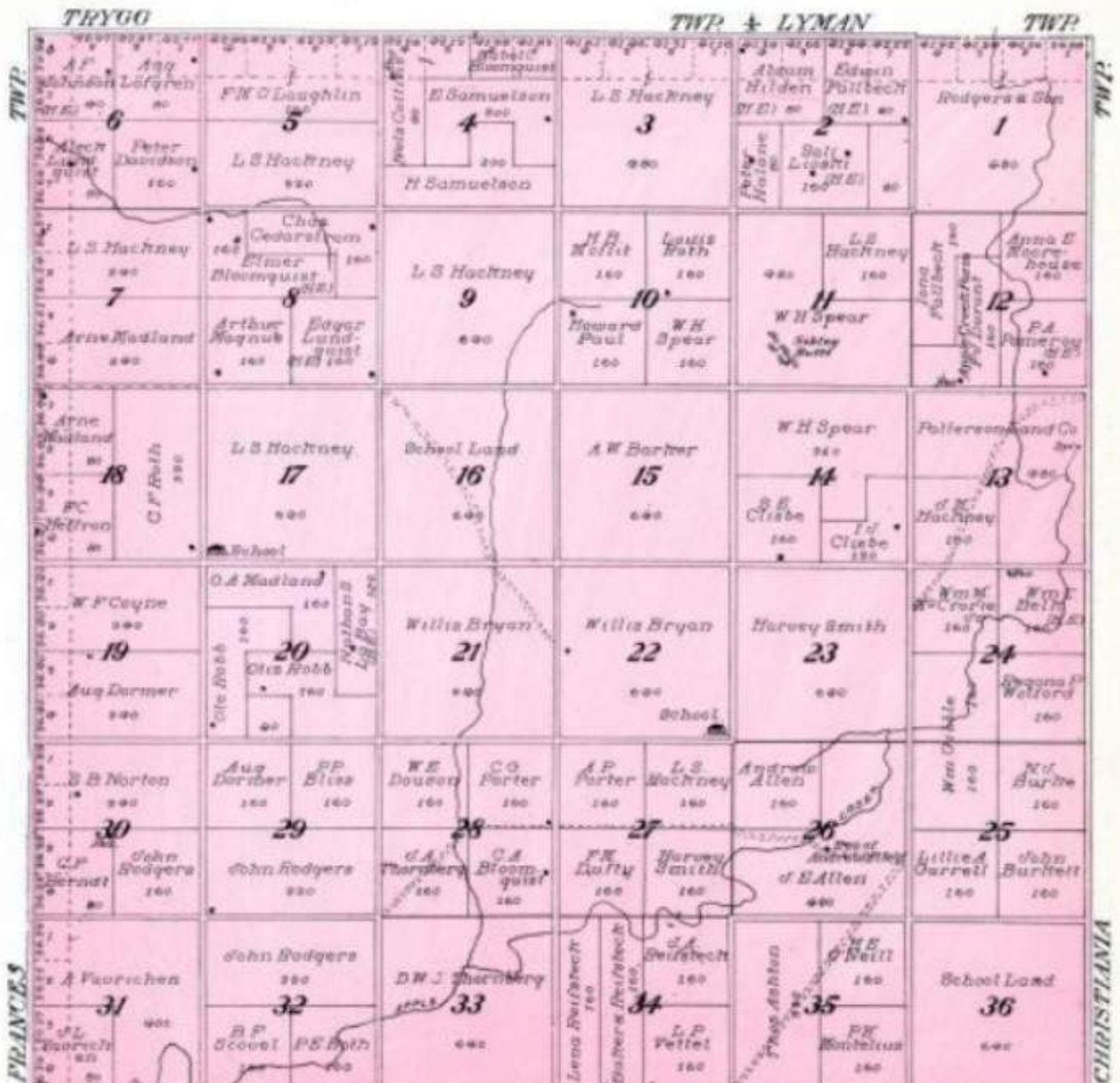
SHERIDAN						CO.	
TWP.	6 K Kramnick F. Eiste 120 180	5 S. W. Wheelock Trustee 220	4 Frank King E. R. Sam'l Adelman Slawek 260 260	3 A. W. Wheelock Trustee 220	2 Paul Bahub Jas. Kostal 260 260	1 J. A. Fritch 220	TWP.
7 F. P. Keller Geo. Saffler Geo. K. Schmitt 200 200	A. W. Wheelock Trustee 220	8 Frank Kramnick Anna C. Schroeder 200 200	9 A. W. Wheelock Trustee 220	10 Louis Plat Chas. L. Terbel 200 200	11 Frank Novek Paul Kramar 200 200	A. W. Wheelock Trustee 220	12 A. M. Christmann Henry Otleson Mary Christmann 200 200
18 A. W. Kepp Frank Brown 200 200	Jacob Hess Geo. H. Busch 200 200	17 A. W. Wheelock Trustee 220	16 School Land School 200	15 Hanson & Hanson A. W. Wheelock Trustee 220 220	14 John R. Novek M. T. Novek 200 200	13 Thos. Novek Thos. Novek Jr. 200 200	12 Roy Eberle A. W. Wheelock Trustee 220
19 J. P. Keeley J. T. Royce 240 200	Philip Schuh Ed. Wanek 200 200	20 Jacob & John J. Wanek Schmidt 200 200	21 A. W. Wheelock Trustee 220	22 John Hieb Otto Vogel 200 200	23 Fred E. Bolter 200	24 Eug. C. Kummer Hansel Kummer 200 200	TWP.
30 Wm. P. Sander J. S. Dixon 200 200	Peter Anderson John F. Granting 200 200	29 A. T. Torbert 200	28 Henry Schaefer L. Speels 200 200	27 Thos. Macholus J. P. Keeley L. Speels Contd. 220 220	26 Jay Guffe 200	25 W. K. Wilmol Jay Guffe 200 200	TWP.
31 W. J. Nebrow K. P. Keller 200 200	Henry Schilling Jesse R. Parker E. W. Parker 200 200	32 O. A. Kumpert 200	33 Florence N. Gulfs 240	34 C. A. Barkins A. E. Pfiffner 200 200	35 Nettie Wilmol E. Sorenson 200 200	36 School Land 200	TWP.
PLEASANT VIEW							FLORENCE LAKE

SIBLEY BUTTE

TOWNSHIP

Scale 1/4 inches to 1 mile

Township 140 North, Range 77 West of the 5th P. M.



STERLING

TOWNSHIP

Scale 1 1/2 inches to 1 mile

Township 139 North, Range 76 West of the 8th P. M.



TAFT

TOWNSHIP

Scale 1/4 inch to 1 mile

Township 188 North, Range 76 West of the 5th P. M.

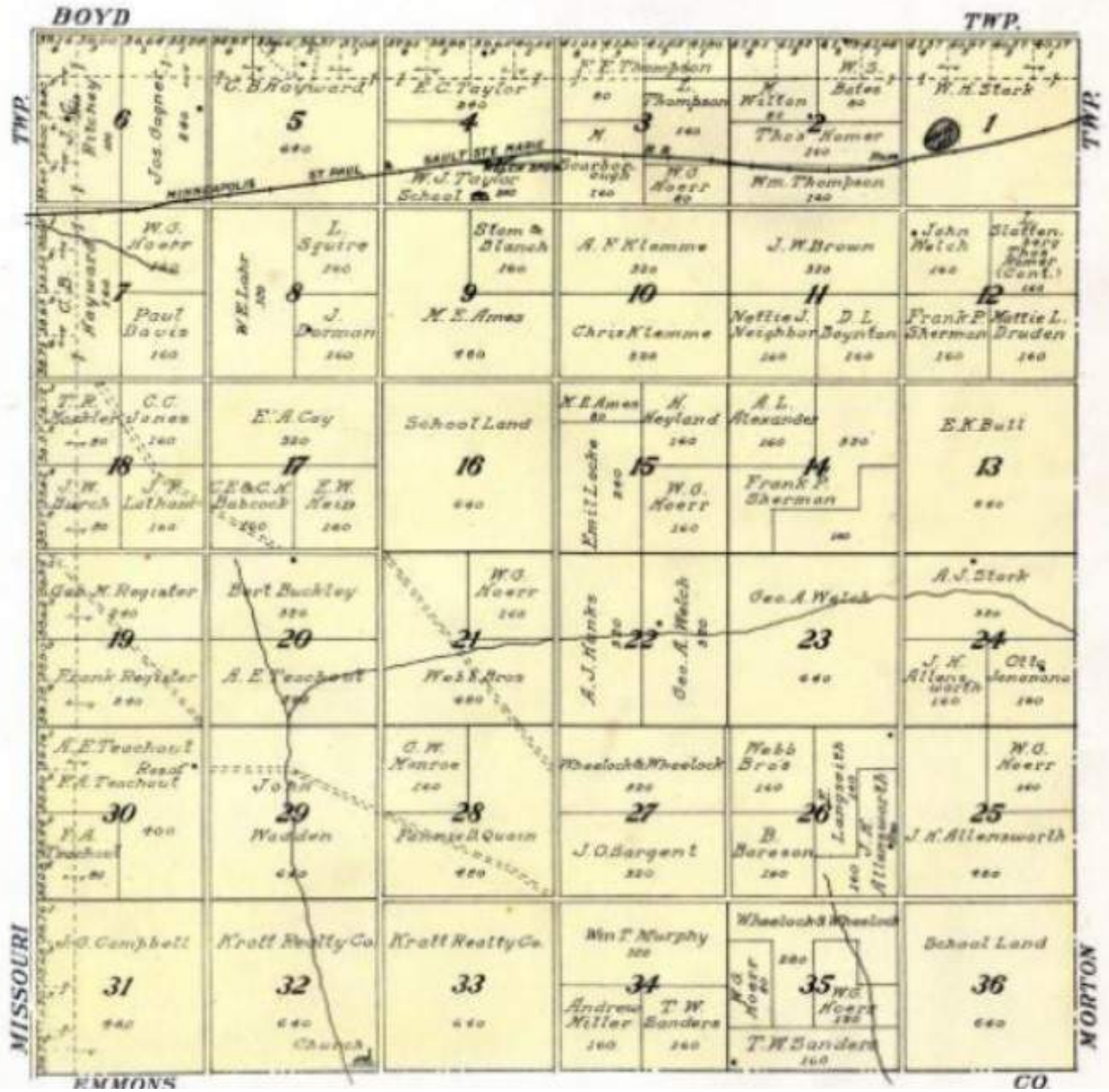
	STERLING												TWP																																					
TWP	<table border="1" style="width: 100%; border-collapse: collapse;"> <tr> <td style="width: 25%;">6 Henry 200 A. E. Thure 200</td> <td style="width: 25%;">5 Finke 200 W. E. Finke 200</td> <td style="width: 25%;">4 A. P. Co. 200 W. P. Co. 200</td> <td style="width: 25%;">3 C. N. Baynton 200 E. B. Berrisford 200</td> <td style="width: 25%;">2 A. D. Cordner 200 A. B. Hunt 200 W. S. of E. M. Hall 200 W. S. Schanche 200</td> <td style="width: 25%;">1 C. W. Goodhue 200 S. W. Mass 200</td> </tr> <tr> <td>7 Anderson & Beale 200</td> <td>8 F. B. Loomis 200</td> <td>9 Frank Shipp 200 E. O. Oterson 200 M. J. Jensen 200</td> <td>10 Kath Riley 200 E. L. Murr 200</td> <td>11 Jas Phillips 200 J. Phillips 200</td> <td>12 A. L. Stewart 200 S. N. Hague 200 Marie Norton 200 Father L. Nellie M. Johnson 200 Chaffield 200</td> </tr> <tr> <td>18 Wm. Hood 200 W. E. Souver 200 N. E. Souver 200 W. E. Souver 200</td> <td>17 A. J. O. Egeland 200 P. H. Meiss 200</td> <td>16 T. S. Greney 200 J. J. Grauer 200</td> <td>School Land 200</td> <td>15 E. L. Murr 200 C. N. Boynton 200 J. M. Halmes 200</td> <td>14 Louis Gagnier 200 M. V. Yackey 200 E. G. Fogarty 200</td> <td>13 May Riky 200 J. N. Cook 200 Chas. A. Hopkins 200 F. W. L. Hopkins 200</td> </tr> <tr> <td>19 I. D. Wilson 200 Rena M. Fryatt 200</td> <td>20 C. C. Allen 200 E. A. Lang 200</td> <td>21 A. G. Allen 200 L. B. Mackney 200</td> <td>22 J. M. Mandeville 200 E. L. P. French 200</td> <td>23 B. N. Simpson 200 J. L. Baker 200</td> <td>24 Peter Beitz 200 John Bruschwein 200 W. A. Nelson 200 N. P. Fogarty 200 J. A. Neiman 200 J. Butler 200</td> </tr> <tr> <td>30 G. Wald 200 E. E. Cline 200</td> <td>29 Chas. Ossen 200 Wm. Brittin 200</td> <td>28 Brittin Bros 200 A. D. Gardner 200</td> <td>27 Geo. N. Lewis 200 F. W. Dessel 200 A. D. Gardner 200 Geo. N. Nordal 200</td> <td>26 Ed. Olson 200 F. Ruddy 200 Z. B. Lesh 200</td> <td>25 Geo. A. Lincoln 200</td> </tr> <tr> <td>31 J. N. Moring & Zumbach 200 S. F. Schock 200</td> <td>32 K. Olsen 200 Chas. B. Gaskill 200</td> <td>33 F. A. Neeler 200 L. D. Bailey 200</td> <td>34 F. S. De Lang 200 Y. A. Camfort 200</td> <td>35 A. Cairns 200</td> <td>36 School Land 200</td> </tr> </table>												6 Henry 200 A. E. Thure 200	5 Finke 200 W. E. Finke 200	4 A. P. Co. 200 W. P. Co. 200	3 C. N. Baynton 200 E. B. Berrisford 200	2 A. D. Cordner 200 A. B. Hunt 200 W. S. of E. M. Hall 200 W. S. Schanche 200	1 C. W. Goodhue 200 S. W. Mass 200	7 Anderson & Beale 200	8 F. B. Loomis 200	9 Frank Shipp 200 E. O. Oterson 200 M. J. Jensen 200	10 Kath Riley 200 E. L. Murr 200	11 Jas Phillips 200 J. Phillips 200	12 A. L. Stewart 200 S. N. Hague 200 Marie Norton 200 Father L. Nellie M. Johnson 200 Chaffield 200	18 Wm. Hood 200 W. E. Souver 200 N. E. Souver 200 W. E. Souver 200	17 A. J. O. Egeland 200 P. H. Meiss 200	16 T. S. Greney 200 J. J. Grauer 200	School Land 200	15 E. L. Murr 200 C. N. Boynton 200 J. M. Halmes 200	14 Louis Gagnier 200 M. V. Yackey 200 E. G. Fogarty 200	13 May Riky 200 J. N. Cook 200 Chas. A. Hopkins 200 F. W. L. Hopkins 200	19 I. D. Wilson 200 Rena M. Fryatt 200	20 C. C. Allen 200 E. A. Lang 200	21 A. G. Allen 200 L. B. Mackney 200	22 J. M. Mandeville 200 E. L. P. French 200	23 B. N. Simpson 200 J. L. Baker 200	24 Peter Beitz 200 John Bruschwein 200 W. A. Nelson 200 N. P. Fogarty 200 J. A. Neiman 200 J. Butler 200	30 G. Wald 200 E. E. Cline 200	29 Chas. Ossen 200 Wm. Brittin 200	28 Brittin Bros 200 A. D. Gardner 200	27 Geo. N. Lewis 200 F. W. Dessel 200 A. D. Gardner 200 Geo. N. Nordal 200	26 Ed. Olson 200 F. Ruddy 200 Z. B. Lesh 200	25 Geo. A. Lincoln 200	31 J. N. Moring & Zumbach 200 S. F. Schock 200	32 K. Olsen 200 Chas. B. Gaskill 200	33 F. A. Neeler 200 L. D. Bailey 200	34 F. S. De Lang 200 Y. A. Camfort 200	35 A. Cairns 200	36 School Land 200	TWP
6 Henry 200 A. E. Thure 200	5 Finke 200 W. E. Finke 200	4 A. P. Co. 200 W. P. Co. 200	3 C. N. Baynton 200 E. B. Berrisford 200	2 A. D. Cordner 200 A. B. Hunt 200 W. S. of E. M. Hall 200 W. S. Schanche 200	1 C. W. Goodhue 200 S. W. Mass 200																																													
7 Anderson & Beale 200	8 F. B. Loomis 200	9 Frank Shipp 200 E. O. Oterson 200 M. J. Jensen 200	10 Kath Riley 200 E. L. Murr 200	11 Jas Phillips 200 J. Phillips 200	12 A. L. Stewart 200 S. N. Hague 200 Marie Norton 200 Father L. Nellie M. Johnson 200 Chaffield 200																																													
18 Wm. Hood 200 W. E. Souver 200 N. E. Souver 200 W. E. Souver 200	17 A. J. O. Egeland 200 P. H. Meiss 200	16 T. S. Greney 200 J. J. Grauer 200	School Land 200	15 E. L. Murr 200 C. N. Boynton 200 J. M. Halmes 200	14 Louis Gagnier 200 M. V. Yackey 200 E. G. Fogarty 200	13 May Riky 200 J. N. Cook 200 Chas. A. Hopkins 200 F. W. L. Hopkins 200																																												
19 I. D. Wilson 200 Rena M. Fryatt 200	20 C. C. Allen 200 E. A. Lang 200	21 A. G. Allen 200 L. B. Mackney 200	22 J. M. Mandeville 200 E. L. P. French 200	23 B. N. Simpson 200 J. L. Baker 200	24 Peter Beitz 200 John Bruschwein 200 W. A. Nelson 200 N. P. Fogarty 200 J. A. Neiman 200 J. Butler 200																																													
30 G. Wald 200 E. E. Cline 200	29 Chas. Ossen 200 Wm. Brittin 200	28 Brittin Bros 200 A. D. Gardner 200	27 Geo. N. Lewis 200 F. W. Dessel 200 A. D. Gardner 200 Geo. N. Nordal 200	26 Ed. Olson 200 F. Ruddy 200 Z. B. Lesh 200	25 Geo. A. Lincoln 200																																													
31 J. N. Moring & Zumbach 200 S. F. Schock 200	32 K. Olsen 200 Chas. B. Gaskill 200	33 F. A. Neeler 200 L. D. Bailey 200	34 F. S. De Lang 200 Y. A. Camfort 200	35 A. Cairns 200	36 School Land 200																																													
LOGAN	LONG LAKE												THELMA																																					

TELFER

TOWNSHIP

Scale 1/4 inch to 1 mile

Township 187 North, Range 78 West of the 6th P. M.



MAP OF THELMA TOWNSHIP

Scale 1/4 inch to 1 mile

Township 128 North, Range 75 West of the 1st P. M.



TRYGG

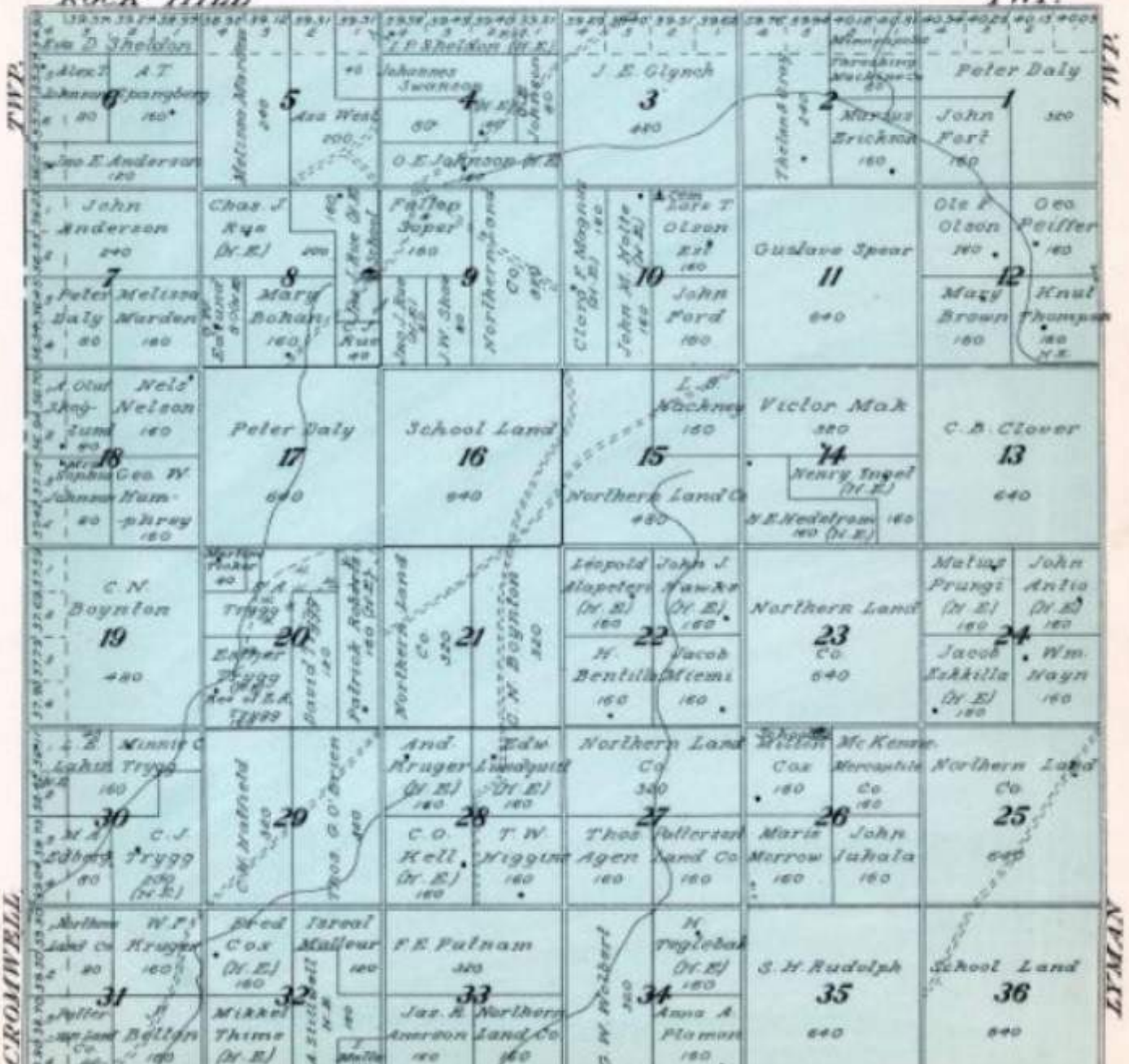
TOWNSHIP

Scale 1/4 inch to 1 mile

Township 141 North, Range 77 West of the 5th P. M.

ROCK HILL

TWP.

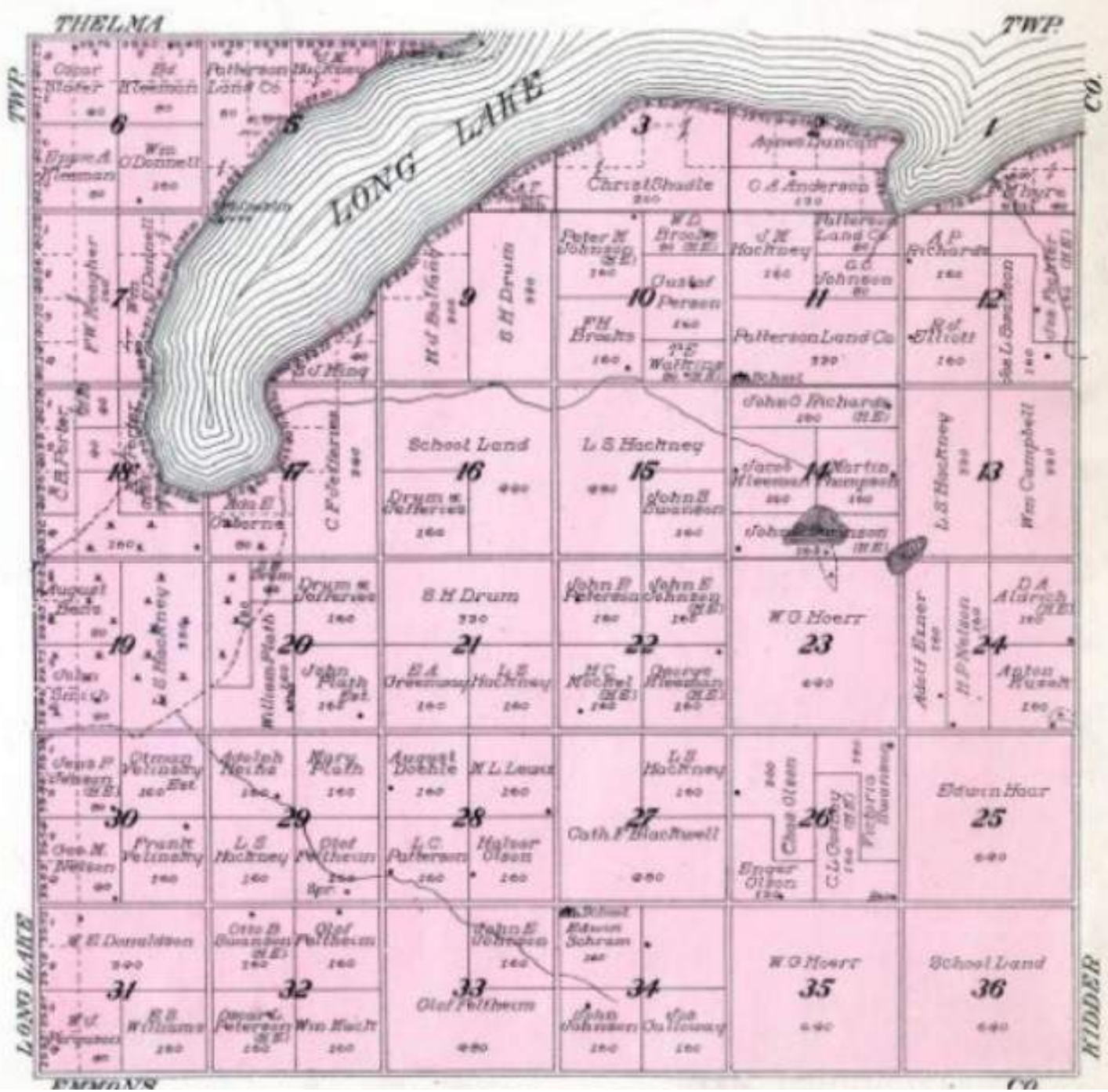


WILD ROSE

TOWNSHIP

Scale 1/4 inch to 1 mile

Township 187 North, Range 78 West of the 6th P. M.



WING TOWNSHIP

Scale 1/4 inches to 1 mile

Township 142 North, Range 76 West of the 5th P. M.

