

COMMUNITY
FACT
SURVEY

TOWNER

North Dakota



COMPILED BY
TOWNER ASSOCIATION OF COMMERCE
TOWNER INDUSTRIAL DEVELOPMENT ASSN.
IN COOPERATION WITH
OTTER TAIL POWER COMPANY

F
644
.T69
T6x

Towner, North Dakota.

**NORTH DAKOTA STATE LIBRARY
BISMARCK 58501**



AUG 14 1974

| | |
|---|---------|
| Introduction | 1 |
| Mayor's Letter | 2 |
| Association of Commerce Letter | 3 |
| Industrial Development Association Letter | 4 |
| General Information | 5 - 6 |
| Agriculture - Trade Area Map | 7 - 9 |
| Raw Materials and Resources | 10 - 11 |
| Climate | 12 |
| Municipal Services | 13 - 15 |
| Community Facilities | 16 - 22 |
| Community Services | 23 - 26 |
| Transportation and Fuels | 27 - 29 |
| Electric Power | 30 |
| Communications | 31 |
| Tax Structure | 32 |
| Labor | 33 - 36 |
| Market Information | 37 |
| Industrial Development | 38 - 41 |
| Garrison Diversion Unit | |



.T69
T6x

TOWNER, NORTH DAKOTA

Population

1960 - U. S. Census - 948
1964 - Current Estimate - 1,025

COMMUNITY FACT SURVEY

Sponsored By

Towner Association of Commerce

and

Towner Industrial Development Association

In Cooperation With

Area Development and Community Relations Department
Otter Tail Power Company
Fergus Falls, Minnesota

This brochure is the result of a community fact survey undertaken in Towner, North Dakota, by the Association of Commerce and the Industrial Development Association in cooperation with the Otter Tail Power Company. The information was compiled with the hope that it would be of interest and of value to industries, commercial concerns and professional people that were considering Towner as a potential site. Every effort was made to make this brochure as complete and factual as possible.

A word of thanks and appreciation is extended to all who assisted in the preparation of this brochure.

• THE CITY COMMISSION

Towner, N. Dak.

Towner, a small city on the move, has many opportunities and advantages to offer industry of a variety of types.

The residents are proud of their thriving city and of the friendliness of its residents.

We have fine churches, schools and homes. Our recreational facilities are excellent and expanding from year to year.

As Mayor of Towner, I extend a most cordial invitation to make our city your new home and to consider our city for the expansion of your commercial, industrial or private business.

Most cordially,



Andrew Busch
President and Mayor of
the City of Towner
Towner, North Dakota

TOWNER ASSOCIATION OF COMMERCE

TOWNER, N. DAK.

Dear Friend:

Towner, the county seat of McHenry County, located in the Mouse River Loop, is one of the most prosperous and congenial communities in the State of North Dakota.

This brochure is published under sponsorship of the Towner Association of Commerce in cooperation with Otter Tail Power Company and we feel confident that the information contained herein will be of interest and help to anyone interested in locating a business in Towner.

We know that the Towner area is unexcelled as far as potential for manufacturers, industrial developers or for the promotion of agricultural business because of the fine location.

We are on the main line of the Great Northern Railway which travels east and west, and we are on U. S. Highway 2 and State Highway 14.

We are located in an area which will be the center of the Missouri River-Garrison Diversion Project. This seems assured of approval in the coming session of Congress.

Our business district has almost everything to offer families in the line of goods and services. Our school and church facilities are outstanding. We have fine athletic facilities with an excellent city park and a swimming pool.

We are only 15 miles from the Lower Souris Wildlife Refuge which offers some of the finest mallard duck and wild goose shooting in the northwest. This also is one of the best deer hunting areas in the country.

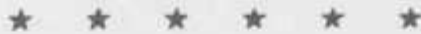
We extend a most cordial invitation to any industry looking for a location to come and see us. Our planning board and our Industrial Development Association would be most happy to help work out details should there be requirements necessary which are not now available.

We are proud to say that we feel Towner is one of the finest places in the northwest in which to live and to raise a family. We know you would be pleased with the selection of this city as your future location.

Herbert W. Booth

Herbert W. Booth, President
TOWNER ASSOCIATION OF COMMERCE

Towner Industrial Development Ass'n.



Towner, North Dakota

The pages of this Community Fact Survey contain, as nearly as possible, factual information about Towner, the Cattle Capital of North Dakota and the County Seat of McHenry County.

This survey has been compiled at the request of the Towner Association of Commerce and the Towner Industrial Development Association under sponsorship of the Otter Tail Power Company.

Any additional information which may be desired concerning Towner's industrial sites and potential may be obtained by contacting members of the above named civic groups.

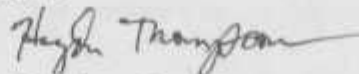
Towner offers many advantages, being located on U.S. Highway 2--the air-conditioned highway of the north, and on the main line of the Great Northern Railway. Towner is the gateway to the Mouse River Loop, famous for its abundance of prairie hay.

There is excellent hunting in the area, with waterfowl and deer being especially prevalent. The Lower Souris Wildlife Refuge is located just a short distance away.

Towner has a fine high school building, and a new elementary school building will be constructed in the very near future. A bond issue has recently been passed by the voters. There are churches serving three denominations and the city has a medical center.

Many new homes are being built each year and we believe this is evidence that people find Towner a good place in which to make their homes. A survey conducted by the Industrial Development Association last winter revealed an ample labor supply in the surrounding area which would be sufficient to man almost any kind of new enterprise. This survey has been effectual in bringing about the expansion of two local businesses during the past year, with the addition of several men to their work force, bringing an additional increase in payrolls and consequent boost to the local economy.

We are convinced that most any small industry would find all its needs available in Towner and if not, the Industrial Development Association will attempt to expand its facilities to meet those needs.



Hayden H. Thompson, President
Towner Industrial Development Association
Towner, North Dakota

LOCATION

Towner, county seat of McHenry County, is located in north-central North Dakota about 40 miles below the Canadian Border. Its location is near the center of the county. In relation to major North Dakota cities, Minot is about 45 miles west of Towner via paved U. S. Highway No. 2; Grand Forks lies about 165 miles east via U. S. Highway No. 2; and Bismarck is situated about 100 air miles south.

Of special interest about 18 miles east of Towner lies the geographical center of North America.

In addition to east-west U. S. Highway No. 2, Towner is served by north-south Highway No. 14, a black-top state route, and by the main line of the Great Northern Railroad on its St. Paul to Minot route via Fargo, Grand Forks and Devils Lake.

Towner, located about one mile east of the Mouse River along what is called the Mouse River Loop, is also situated in the Mouse River Irrigation District. The Towner area was once part of ancient glacial Lake Souris, a fact which greatly influenced the local topography and natural resources.

BRIEF
HISTORY

Although there were a few settlers in the area of what is now Towner, it was not until the coming of the railroad in August, 1886, that people arrived in large numbers followed by the erection of homes and business establishments. The town was platted the same year and incorporated May, 1892. By 1904, Towner had shown considerable growth and was incorporated as a city.

Towner was named in honor of Colonel O. H. Towner, an early day rancher and promoter who was instrumental in bringing many homesteaders into the area.

Due to the great amount of prairie grass which was available, the area economy developed around the livestock industry. While grain production has increased in importance through the years, Towner still considers itself to be the "Cattle Capital" of North Dakota.

ELEVATION &
TOPOGRAPHY

The elevation of Towner is approximately 1,490 feet above sea level. Throughout McHenry County and northwards through central Bottineau County, an average 1,500-foot elevation prevails. Once part of the lakebed of glacial Lake Souris, this forms a relatively low area of uniform elevation in the north-central part of the state which is suitable for irrigation. Scattered portions of McHenry County include steep slopes and wooded hilly areas.

The terrain about the city of Towner is mainly gently rolling, dominated by light textured sandy loams which are well suited for pasture and grazing land production. The topsoil varies from heavy textured lake bottom soils on the level terrain on up through light sandy loams elsewhere.

GENERAL INFORMATION

A portion of the Mouse River Loop traces a semicircular path through the central and northeastern parts of the county, while a network of waterways throughout the northern part of the county forms a confluence with the Mouse River near the county's north-central border. All of this, located above the north-south continental divide, forms part of the Souris River system which ultimately drains into Hudson Bay via Lake Winnipeg. Drainage conditions in the county are excellent.

POPULATION

According to the U. S. Census figures, Towner population figures are as follows:

| | | |
|-----------------|---|-------|
| 1930 | - | 622 |
| 1940 | - | 918 |
| 1950 | - | 955 |
| 1960 | - | 958 |
| 1965 (Estimate) | - | 1,025 |



NORTH DAKOTA COMMUNITY
BETTERMENT AWARDS DAY

FOOTBRIDGE - MOUSE RIVER



**GENERAL
AGRICULTURAL
DATA**

As is typical nation-wide, the number of farms is decreasing in the county while the average size of farms is increasing. However, a great portion of the county is in the Mouse River Irrigation District, Karlsruhe Irrigation District and Middle Souris Irrigation District, and future prospects for significant gains in livestock and crop production are promising for the trade area of Towner.

**FARM
SERVICES**

Towner provides farm services that are largely adequate in meeting the needs of the trade area. Examples of available services include feed grinding, roller milling, ground and aerial custom spraying, a blacksmith service and four implement dealers, each of which provide repair service. However, there is room for expansion in the farm services area and interested parties may contact the Towner Association of Commerce for further information.

**SIZE & VALUE
OF FARMS**

For 1959, there was a total of 1,437 farms in McHenry County, the average size being 774.8 acres and the average value of land and buildings being \$32,000. Farms under 500 acres in size have decreased while those over 1,000 acres in size have increased.

According to the Agricultural Census of 1959, the classification of farms by size for McHenry County is as follows:

| <u>Class</u> | <u>Number</u> |
|---------------------|---------------|
| 179 acres or less | 124 |
| 180 - 499 acres | 403 |
| 500 - 999 acres | 593 |
| 1,000 acres or more | 317 |

CROPS

Towner is located in an area noted for its records in wild hay production, a factor contributing strongly to the city's reputation as "Cattle Capital" of the state. The major cash crops are wheat, barley and flaxseed. In 1959, the total income for these grain crops was \$4,420,000.

According to the Agricultural Census of 1959, data on major crop production for McHenry County is as follows:

| <u>Crop</u> | <u>Bushels</u> |
|-------------|----------------|
| Wheat | 3,848,185 |
| Barley | 983,588 |
| Flax | 123,603 |

LIVESTOCK

In 1959, sales of livestock and livestock and dairy products totaled \$4,965,000. This figure is 53% of the total agricultural income for the county, making livestock the major source of farm income for the year. Out of production totals, the sale of cattle and calves sold alive accounted for nearly 75% of livestock income.

AGRICULTURE

The Agricultural Census of 1959 data on livestock and poultry production for McHenry County is as follows:

| <u>Income Source</u> | <u>Production</u> |
|----------------------|-------------------|
| Cattle & Calves | 56,622 |
| Hogs & Pigs | 7,218 |
| Sheep & Lambs | 12,335 |
| Chickens | 78,482 |

CHEESE PRODUCTION

Winger Cheese, Inc. was founded in 1960 and in 1964 produced a variety of cheeses totaling 3,500,000 pounds. A substantial amount of the milk production in the area is delivered to this plant. The company averages 15 full-time employees and sells the major portion of its product to Kraft Foods. Winger Cheese was induced to locate in Towner through efforts and cooperation of the Industrial Development Association.

The cheese store was opened a few weeks after cheese manufacturing began here and was the first such store in North Dakota. This store sells direct to the local consumer and also fills mail orders for gift-wrapped packages of cheese.

HONEY PRODUCTION

Gunter Brothers Company has been in operation for ten years and supplies an average of 40,000 pounds of honey annually to a national market. The plant employs 4 persons on a full-time basis and 2 persons part time.



GUNTER BROTHERS HONEY



WINGER CHEESE, INC.

... Our Trade Area



RAW MATERIALS & RESOURCES

CONCRETE & GRAVEL

The Towner area provides abundant quantities of sands and gravels. In addition, water resources are in good supply. As a result, the potential for concrete and gravel services remains promising for the area.

OIL

At present there are four producing oil wells in McHenry County. The tax revenue from these wells to the county totaled \$4,153.48 for the period March 1, 1960, to March 30, 1964. Oil revenues are distributed in the following manner: schools, 45%; roads and bridges, 40%; and municipalities, 15%.

Since the Towner area lies within the limits of the vast Williston Basin, the potential of this resource for the Towner area is still an open matter. The most reliable and comprehensive sources of information appear to be the North Dakota Geological Survey at University Station, Grand Forks, and the Office of the State Geologist, Bismarck.

LIGNITE

McHenry County shares in one of the state's most prominent natural resources--lignite. Much of the coal locally consumed in Towner is produced and trucked from lignite deposits within the county. According to data provided by the United States Geological Survey, the lignite reserves of McHenry County total an estimated 118 million tons.

RECREATION & TOURISM

Towner is located along a main approach to the Lake Metigoshe resort and recreation area and the International Peace Garden, both being popular tourist attractions.

The city of Towner, a participant in the Turtle Mountain Recreation Area Association, exerts special efforts to accommodate this trade. A variety of recreational facilities and offerings enumerated elsewhere in this publication are well developed and maintained in Towner and the area.

PROPOSED SOURIS LOOP AREA IRRIGATION

Towner is particularly fortunate in being strategically located to benefit from the vast irrigation plans under proposal for the state.

These plans are one part of the many great collateral benefits made available by the now completed Garrison Dam and Reservoir. Generally, by a proposed network of canals and pumping stations, water from Garrison Reservoir will be diverted to several large, irrigable areas located throughout north-central to southeastern North Dakota. At present the largest of the irrigable areas is the Souris Loop area in which Towner is centrally located.

Towner thus stands ready to reap the benefits of irrigation proposed for approximately 116,000 nearby acres, the Souris Loop area total, part of that embracing nearly half of McHenry County.

RAW MATERIALS & RESOURCES

The most direct benefits will accrue in crop and livestock feed production and the following figures compare dry vs. irrigated land production:

| <u>Crop**</u> | <u>Dry Land</u> <u>Yield</u> | <u>Irrigated</u> <u>Yield</u> | <u>Increase</u> |
|---------------|---------------------------------|----------------------------------|-----------------|
| Barley | 39 Bu/A | 60 Bu/A | 54% |
| Wheat | 22 Bu/A | 40 Bu/A | 80% |
| Corn Silage | 7.1 T/A | 14.0 T/A | 200% |
| Corn Grain | 36 Bu/A | 85 Bu/A | 235% |
| Alfalfa | 1.5 T/A | 4.0 T/A | 270% |

**Source: Carrington Irrigation Experimental Station
1960 - 1964 field trials

The Towner Nursery, located one mile north of the city, is a government nursery devoted mainly to the growing of trees and shrubs. Approximately 3,000,000 units per year are furnished to soil conservation districts throughout a five-state area. An inventory of seedlings of all age classes indicates 15,000,000 on hand. The maximum number of employees reaches a total of 40 during the busy season.

The Wood Preserving and Products Company, established in 1959 with local capital, is another asset to the economy of Towner. Some of the products of this plant are treated bridge lumber, treated posts and poles, surveyors' stakes and laths, rustic signs and construction shims. Another item which is being produced is an all-purpose wood shipping crate kit. Each kit consists of a number of separate components that can be assembled to accommodate many sizes and types of transportable items. The kit is re-usable. Six men are normally employed at the plant.



HAY

BEEF CATTLE



CLIMATE**

TEMPERATURE

The average temperature by months is as follows for the Towner area:

| | | | |
|----------|-------------------|-----------|-------------------|
| January | 10.2 ^o | July | 69.0 ^o |
| February | 15.4 | August | 72.6 |
| March | 29.3 | September | 52.1 |
| April | 37.0 | October | 45.0 |
| May | 52.3 | November | 27.4 |
| June | 68.4 | December | 4.9 |

FROST DATA

The average date of the last frost in the spring is May 12, and the average date of the first frost in the fall is September 13 for an average length of growing season of 123 days.

PRECIPITATION

The annual average precipitation for the Towner area totals 16.50 inches and of that, 8.55 inches occur during the growing season.

**Source: Record of Climatological Observations, compiled by A. B. Rieder of Towner, North Dakota



YOUNG EVERGREENS
TOWNER NURSERY

A RESIDENTIAL STREET



NEW HOUSING

MUNICIPAL SERVICES

GOVERNMENT

Towner is classified as a city. Its type of governing body is of the commission form. Data on municipal officials is as follows:

| <u>Title</u> | <u>Elected</u> | <u>Appointed</u> | <u>Term of Office</u> |
|------------------------------------|----------------|------------------|-----------------------|
| Mayor & President of Commission | X | | 4 years |
| Street Commissioner | X | | 4 years |
| Police Commissioner | X | | 4 years |
| Park Commissioner | X | | 4 years |
| Water Commissioner | X | | 4 years |
| City Auditor | | X | 4 years |

Municipal elections are held annually on the first Tuesday in April.

Present officials include Andrew Busch, President, and the following Commissioners: Olaf Erickson (Streets), Arvid Gumelius (Police), William Hutton (Park), and Clifford Larson (Water). Kenneth McDonald is City Auditor.

OTHER GOVERNMENT DATA

The city of Towner is debt free. The annual city budget of \$30,000 is financed mainly by general taxes, license fees, liquor taxes, and water charges.

Government offices located in Towner other than city offices are:

- Agricultural Stabilization Commission (ASC)
- Farm Home Administration (FHA)
- North McHenry Soil Conservation District
- McHenry County Agent
- Selective Service

WATER SYSTEM

Towner has a municipal water supply provided by 5 wells tapped at an average depth of 40 feet per well. Total storage capacity for the water system is 65,000 gallons. The tap water temperature is 48° in winter and 58° in summer.

The water requires no treatment and is pure and clear. Records reveal no significant changes in the depth of the water table over the past five years. Data from the North Dakota State Department of Health reveals the following 1964 analysis:

| | <u>Well No. 2</u> | <u>All Wells</u> |
|----------------|-------------------|------------------|
| Iron (Fe) | 1.0 ppm | 1.6 ppm |
| Manganese (Mn) | Trace | Trace |
| pH | 7.6 ppm | 8.0 ppm |
| Calcium (Ca) | 68.0 ppm | 76.0 ppm |
| Magnesium (Mg) | 32.0 ppm | 30.0 ppm |
| Sodium (Na) | 90.0 ppm | 20.0 ppm |

MUNICIPAL SERVICES

| | <u>Well No. 2</u> | <u>All Wells</u> |
|--|-------------------|------------------|
| Fluoride (F) | 0.1 ppm | Trace |
| Chloride (Cl) | Trace | 5.0 ppm |
| Sulfates (SO ₄) | 70.0 ppm | 65.0 ppm |
| Bicarbonates (HCO ₃) | 293.0 ppm | 305.0 ppm |
| Carbonates (CO ₃) | Trace | Trace |
| Nitrates (NO ₃) | Trace | Trace |
| Conductivity | 1925 ohms | 1770 ohms |
| | | |
| Total Dissolved Solids | 553.0 ppm | 501.0 ppm |
| Total Alkalinity (as CaCO ₃) | 240.0 ppm | 250.0 ppm |
| Total Hardness | 300.0 ppm | 315.0 ppm |

Water rates are the same for either business or residential use: \$2.00 for the first 2,000 gallons and 50¢ per thousand gallons over the base quantity on a monthly basis. This figure includes charges for use of the sewer. There are no changes planned for the system.

POLICE DEPARTMENT

Towner has one full-time and one part-time policeman, both trained in police work. Police protection is extended to existing business and industry.

Special equipment of the police department includes a car equipped with 2-way radio and a truck. No changes are planned for the department at present.

In addition to the City Police, the County Sheriff with one deputy as well as a member of the North Dakota Highway Patrol are located in Towner.

FIRE PROTECTION

Fire protection is provided in Towner by a volunteer fire department consisting of 25 members. Thirty-nine fire hydrants are located throughout the city.

Equipment for the fire department of Towner is as follows:

- 1 - 1938 Ford, 300 gallon tank, with 400 G.P.M. pumping capacity.
- 1 - 1951 Chevrolet, 500 gallon tank, with 500 G.P.M. pumping capacity.

Fire protection in the city places Towner in a fire insurance classification of 7.

In addition to furnishing fire protection to the city, the fire department also extends protection for areas outside the city limits. A building is provided in the city for storage of the rural fire truck; in return, the city may use the truck if needed for fires that occur within the city limits. The rural fire truck is a 1961 International, with a 1,000-gallon tank, a 750 G.P.M. main pump and a 250 G.P.M. auxiliary pump. There is also 400 feet of 1½-inch hose and 1200 feet of 2½-inch hose.

MUNICIPAL SERVICES

There are no changes planned for the existing departmental facilities at the present time.

STREETS

There are 12 miles of streets in Towner of which 8 miles are hard surfaced. No load restrictions or limitations exist.

Street maintenance equipment includes a street maintainer and a street sweeper.

STREET LIGHTING

In the business district of Towner there are twenty-two 24,200 lumen fluorescent lights. In the residential districts, sixty 6,000 lumen mercury vapor lights provide a modern street lighting system. No major changes are contemplated for this system at present.

SEWERAGE SYSTEM

The city of Towner has a city-wide sewerage system. The system is capable of handling additional waste subject to the approval of the City Commission.

GARBAGE DISPOSAL

Garbage disposal is accomplished through contract with a private firm and the rate for this service is \$2.00 per month.



TOWNER FIRE PROTECTION

TOWNER POOL



COMMUNITY FACILITIES

SCHOOLS

Newport Public School District No. 4 is a fully accredited public school system. It is accredited by the State of North Dakota and the North Central Association of Colleges and Secondary Schools.

The school district, at present, operates three buildings--an elementary and a secondary school at Towner and a two-room elementary building at Berwick, North Dakota.

A building program will consolidate these three schools into one central unit located at Towner, North Dakota. This program will cost the district approximately \$500,000. At its completion, the Newport School District will have one of the most modern school plants in North Dakota. The present high school structure was completed in 1952.

The school system has an instructional staff of 27 teachers. It provides an education for 506 students. At the present enrollment, the district maintains an excellent pupil-teacher ratio of 22 students to 1 teacher.

The curriculum of the school is extensive enough to offer a very excellent education. The system needs to improve the vocational aspects of the curriculum. The vocational areas offered are vocational agriculture, shop, and business education subjects. These will be added to in the near future.

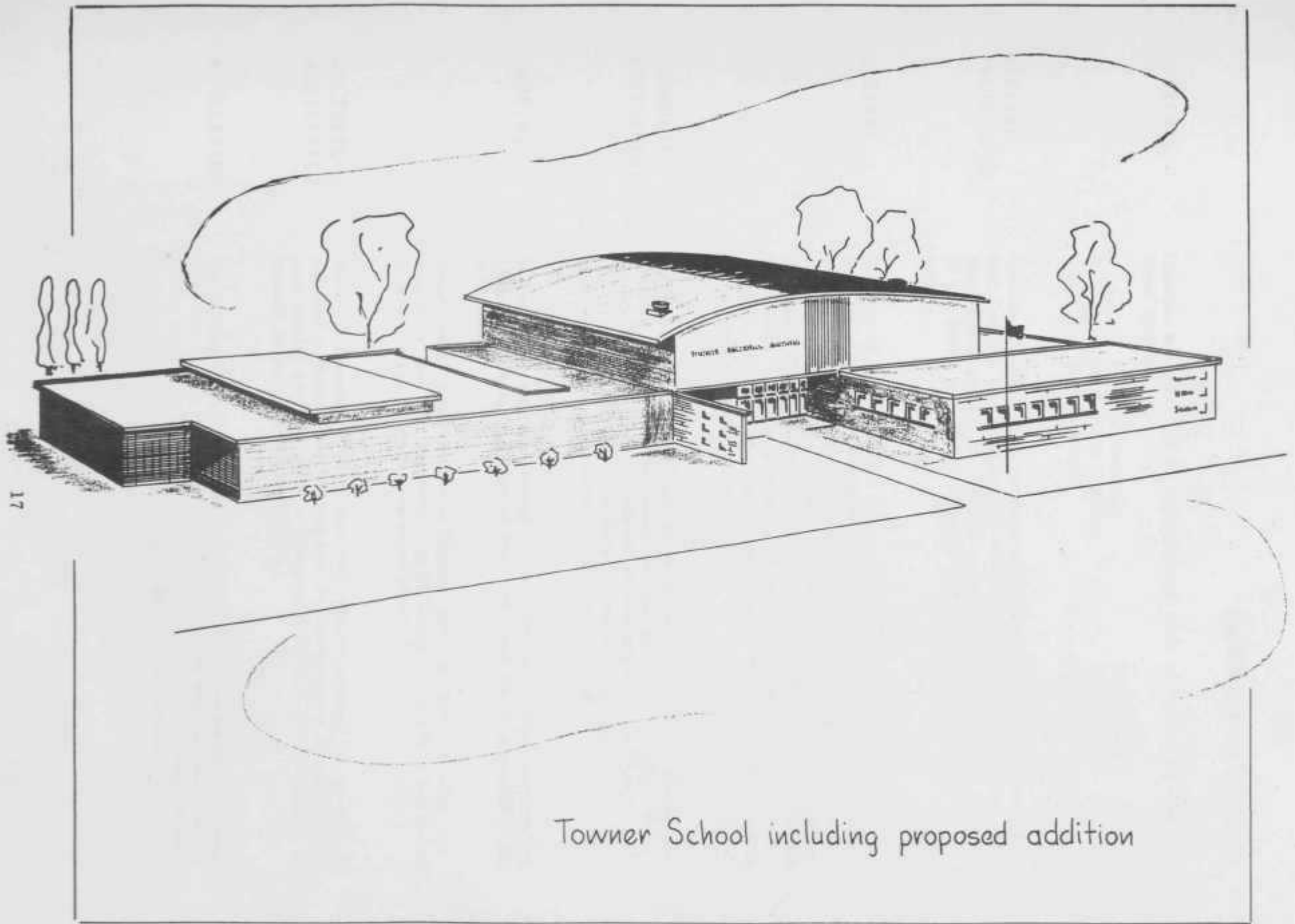
These educational opportunities offered the community youth are derived from a taxable base of \$2,400,000. The full valuation of the district is \$4,800,000. The operating budget for the 1964-65 school year is approximately \$210,000. This is based on a 33 mill levy against the taxable valuation of the district.

In summary, the patrons of Newport School District No. 4 are making a real effort to give their children the finest education possible. It is believed that in time the youth of our community will leave this Newport system well equipped to meet the challenges of the present day world.

Bob Muhs
Superintendent of Schools

The following are nearby and/or commonly attended North Dakota institutions of higher learning, including distances from Towner:

| | | |
|-------------------------------|--------------------|-------------|
| Bottineau Junior College | Bottineau, N. D. | (45 miles) |
| Minot State College | Minot, N. D. | (45 miles) |
| Bismarck Junior College | Bismarck, N. D. | (130 miles) |
| Jamestown College | Jamestown, N. D. | (140 miles) |
| University of North Dakota | Grand Forks, N. D. | (180 miles) |
| North Dakota State University | Fargo, N. D. | (250 miles) |
| State School of Science | Wahpeton, N. D. | (300 miles) |



Towner School including proposed addition

COMMUNITY FACILITIES

CHURCHES

Churches administering to the spiritual needs of Towner and area citizens include:

| | |
|----------------------|-------------|
| First Presbyterian | 200 members |
| St. Cecilia Catholic | 650 members |
| Zion Lutheran | 500 members |

MEDICAL FACILITIES

Another new institution recently created in Towner is the Towner Medical Center. Completed in 1961 with the aid of local financing and promotional support, the medical center makes available to citizens of the Towner area the services of a physician, a dentist and an optometrist.

LIBRARY

The city of Towner has the Towner Public Library which provides library services not only to the immediate vicinity but also functions as a library center for a great portion of the county. The total number of volumes is 3,000. The library was founded in 1932, and sponsored by the Womans Club. The city provides a small amount of money each year for upkeep. Contributions are also made by various clubs and the library is operated by a board consisting of members of these contributing women's organizations.

COMMUNITY BETTERMENT

Towner has been a participant in the state-wide Community Betterment projects for the last two contest periods and in each of the two periods has been among the winners of cash prizes in its population classification. Projects for both periods were on city beautification, recreation and culture, and business and industry.

HOUSING

Six new homes were constructed in 1962, four in 1963 and seven during 1964. The greater majority of these new homes are located within the city limits.

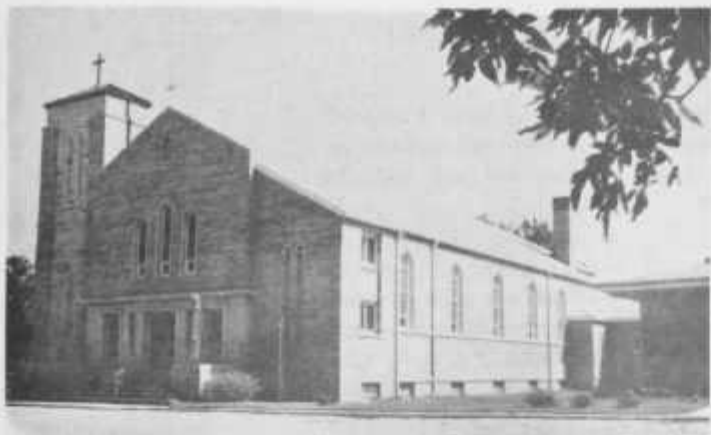
Though rental units are few in Towner, this indicates the value citizens place upon home ownership. An estimated 70% of the total number of homes in the community are owner occupied.

CULTURAL ACTIVITIES

There are a number of clubs that hold regular meetings in the city for cultural purposes. The leading role is usually taken by area women with special interest shown in Homemakers, Hobby Clubs, the Towner Historical Society and Pioneer Daughters.

RECREATION

The tourist factor in recreational facilities is becoming increasingly important in that the nearby Lake Metigoshe and International Peace Garden areas are attracting larger numbers of tourists, many of these stopping in the conveniently located Towner area enroute.



ST. CECELIA'S CATHOLIC CHURCH



ZION LUTHERAN CHURCH



PRESBYTERIAN CHURCH



TOWNER GOLF CLUB

COMMUNITY FACILITIES

Forestry Park, about 1½ miles north of Towner on the Mouse River, forms an attractive recreational and tourist offering. In addition to picnicking facilities, the publicly-owned park also offers camping facilities.

In Towner itself is located the city park, an area two blocks in size, which makes available picnicking facilities and more of the shade trees which predominate in this prairie town. During the summer months, the well kept grounds are a popular recreational spot not only for Towner citizens but for many throughout the county as well. For the youngsters, a supervised program of activities is maintained throughout the summer months. At the same time, citizens of all ages can avail themselves of 2 tennis courts, basketball courts, archery range, swimming pool and horseshoe pits. The swimming pool is a point of pride with Towner for it is the result of community spirited activity and was completed in 1957.

Towner also boasts a modern 9-hole golf course and clubhouse. The club originated in the early 1920's and is located at the northeast edge of the city. The costs of operation are financed from membership dues.

Activities and offerings for the city itself are of good variety. There is a roller skating rink which is open during the summer months. Movies, men's softball and midget ball leagues are other summer offerings, while year-round bowling at the new bowling lanes is also available. A feature attraction of particular interest is the annual Towner Rodeo which every 4th of July brings large crowds for the strictly amateur events. An ice skating rink is operated by the Lions Club.

In the Towner area at large, citizens and tourists find excellent hunting, the area being noted for its abundance of white-tailed deer, mallard ducks, and wild geese. Fishing is available less than 30 minutes away in several directions. Camping facilities, mentioned already, are available in the area while two major tourist areas, also previously mentioned, are nearby.

LOWER SOURIS NATIONAL WILDLIFE REFUGE

About 15 miles north of Towner along the Mouse River is the southern boundary of the Lower Souris Refuge, approximately where the network of waterways (as mentioned in the Topography) forms a confluence with the Mouse River near the northern border of McHenry County. From there the Refuge extends in a narrow strip along both sides of the river northwards to the Canadian Border.

Containing about 59,000 total acres, this Refuge was established in 1935 by the U. S. Fish and Wildlife Service. Since 1935 the Refuge has served not only as a major feeding and resting area for hundreds of thousands of waterfowl migrating along the Central Flyway, but also has served as one of the nation's major duck production areas.

COMMUNITY FACILITIES

To the Towner area, the Refuge makes available various recreational offerings including fishing, hunting, picnicking, wildlife photography and nature study. Thanks to the efforts of the Refuge, the Towner area at large provides excellent hunting for mallard ducks, wild geese and white-tailed deer. On the Refuge itself, when recreational use of some parts is permitted during specified periods, the reserve becomes an attraction for tourists, local citizens, nature observers and hunters.

Of special interest, the Refuge has benefited the conservation of upland game birds, particularly the sharp-tailed grouse, ring-necked pheasant and gray partridge. A wide variety of birds inhabit the Refuge as do a wide variety of wild animals. The latter include beaver, muskrat, mink, raccoon, weasel and skunk in the marshlands and white-tailed deer, coyote, red fox, badger, porcupine and rabbit on the higher ground.



COMMUNITY SERVICES

PROFESSIONAL

Type

Name

Abstracters

McHenry County Abstract Co.

Attorneys

Gerald W. Krengel
Joseph C. McIntee

Dentist

O. L. Kernott

Funeral Directors

Anderson Funeral Home

Optometrist

Dr. K. L. Benson

Pharmacists

Hill's Drug
(Homer Hill & Donald G. Hill)

Physicians & Surgeons

Dr. F. W. Allport

Real Estate and Realtors

McHenry County Real Estate Co.

**BUSINESS &
COMMERCIAL**

Aerial Spraying

Farmers Air Spray Service
(Volk and Anderson)

Agricultural Implement Dealers

Fairbrother Motor Co.
P & H Motor Co.
Towner Implement Co.
Volk Implement

Apparel Stores

Busch's Dept. Store (men-women)
Peterson's Golden Rule (men-women)

Appliance Stores

Sitter's TV & Radio
Towner Electric Service
Towner Heating & Plumbing

Automobile Dealers & Repair Garages

Elmer's Repair Shop
Fairbrother Motor Co.
Hutton Chrysler & Plymouth
P & H Motor Co.
Towner Implement
Volk Implement

Bakery

Towner Bakery

COMMUNITY SERVICES

| <u>Type</u> | <u>Name</u> |
|---------------------------------|--|
| Bank | Pioneer State Bank |
| Barber and Beauty Shops | Carllette Beauty Shop Jungberg's Barber Shop Melvin's Barber Shop |
| Bowling | Towner Bowling Lanes |
| Contractors - Building | Balcer Keller, Sr. Great Plains Supply Jones Construction Co. Towner Lumber Co. Vermedahl Cabinet Shop |
| Creamery | Sveund Cream Sta. Towner Creamery |
| Department Stores | Busch's Dept. Store Peterson's Golden Rule |
| Drug Store | Hill's Drug |
| Dry Cleaning and Laundries | Towner Wash 'n Dri |
| Feed and Seed | Farmers GIA Elevator Farmers Union Oil Co. |
| Financial | General Credit McHenry County Credit Co. |
| Grocery Stores & Meat Markets | Dosch's Jack & Jill Schwenke's Fairway Foods Towner Hed Owl Towner Super-Valu |
| Hardware & Sporting Goods Store | Coast-to-Coast Store |
| Hotel | Hotel Towner |
| Insurance | Farmers Union Oil Co. J. B. Semrau Insurance Agency Pioneer State Bank Insurance Agency Towner Insurance Agency |

COMMUNITY SERVICES

| <u>Type</u> | <u>Name</u> |
|---------------------------|--|
| Lumberyards | Great Plains Supply Co. Towner Lumber Co. |
| Meat Processing | Riverside Meat and Processing Plant |
| Motel | Dreamland Motel |
| Plumbing & Heating | Towner Heating & Plumbing |
| Printers | Mouse River Farmers Press |
| Restaurants | Frank's Cafe Hotel Towner Cafe Johnner's Cafe Towner Bakery Coffee Shop Wagon Wheel Cafe |
| Roller Rink | Towner Roller Rink |
| Salvage Yard | Towner Hide, Fur & Iron Yard |
| Service Stations | Britsch's Standard Fairbrother Motor Co. Farmers Union Oil Co. Frank's Service Hiway Corner Service Hutton's 66 Oil Co. |
| Taverns | Corral Bar Towner Cocktail Lounge Towner Liquor Store |
| Television & Radio Repair | Coast-to-Coast Store Sitter's TV & Radio |
| Theatre | Boxy Theatre |
| Variety Stores | Vetsch's Variety |
| Others | Vetsch's Shoe Store Winger Cheese Store |

FINANCIAL

The bank in Towner is the Pioneer State Bank, with M. T. Thompson as the executive officer. As of December 31, 1964, deposits totaling \$2,400,000 are recorded. The bank has capital accounts totaling \$500,000.

SERVICE CLUBS

Service clubs in Towner include the Towner Association of Commerce, an active community booster organization that has 41 business and 14 associate members. The town also has a relatively large service organization in the Lions Club. The Softball Association is actively engaged in a fund raising project to provide lights for athletic fields.

A special service group in Towner is the Towner Community Betterment Club. A majority of the citizens and business concerns participate in the club on an informal basis but to the extent that a good deal of community improvement has resulted in the past few years. In addition to cleanup campaigns and building and grounds improvement projects, other city-wide efforts have resulted, most of which are detailed elsewhere in this brochure. The effect has been a noticeable improvement in the appearance and attractiveness of the city both to the local citizens and to the increasingly larger number of tourists that visit the area each year.

Boy Scout and Cub Scout organizations are both very active in Towner.

FRATERNAL GROUPS

These are the fraternal organizations that have chapters in Towner:

- American Legion
- American Legion Auxiliary
- Masonic Lodge
- Order of Eastern Star
- Royal Arch Masons
- Veterans of Foreign Wars
- VFW Auxiliary
- Women's Relief Corps



TOWNER MEDICAL CENTER

TRANSPORTATION & FUELS

MOTOR

Towner is served by U. S. Highway No. 2 which is a paved major east-west route that ultimately connects Sault Ste Marie, Michigan, with Seattle, Washington. Also serving Towner is State Highway No. 14, a paved trunk highway that forms the major north-south route for McHenry County.

United Buckingham, an interstate truck line, serves Towner as does Evans Transfer, another interstate line. Both trucking companies make daily pickups available to local business and industry.

RAIL

Towner is located on the main line of the Great Northern Railroad which is an east-west line from St. Paul to Minot and points west. The Great Northern Railroad makes available two daily passenger trains to Towner, while freight service varies from 2 daily runs during the slower shipping periods to 3 daily runs during the peak shipping months.

As another matter of pride to Towner, the city features a new, very attractive railroad station. The station, new in 1959, is a combined freight and passenger depot.



GREAT NORTHERN DEPOT



DREAMLAND MOTEL



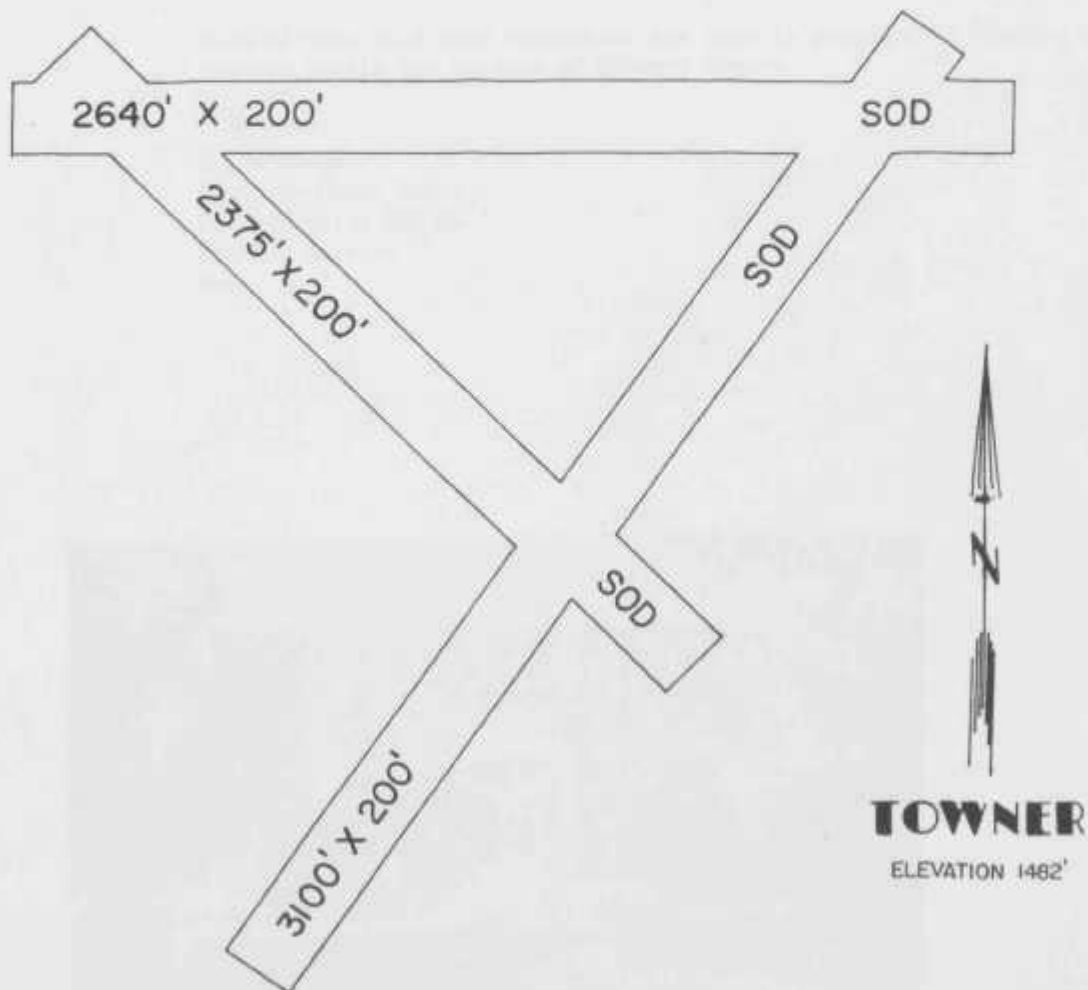
TOWNER HIGH SCHOOL

TRANSPORTATION & FUELS

AIR

Towner has an airfield for private planes located adjacent to the north edge of the city. It is city-owned and operated and provides the following facilities and services: 80 and 96 octane fuel, tie downs and telephone service. The runways are of turf and of such length as shown in the sketch below.

Commercial air line service is available at Minot, North Dakota. Both North Central and Frontier Airlines operate from this field with a total of 10 flights daily.



TRANSPORTATION & FUELS

OIL

Bulk fuel oil is provided by these four dealers in Towner:

Britsch Standard
Farmers Union Oil Company
Hutton's 66 Oil Company
Mobil Bulk Service

Each of these agencies provides bulk fuel oil for business, residential and industrial use.

COAL

Coal is supplied by the GTA Elevator and by Theodore Ohren, the local commercial hauler.

Much of this fuel used throughout the year is provided by lignite mines located within the borders of McHenry County.

GAS

Boehm Propane
Coast-to-Coast Store
Farmers Union Oil Co.
Frank's Service
Solar Gas



MC HENRY COUNTY WAR MEMORIAL BUILDING

ELECTRIC
POWER

Towner is served electrically by Otter Tail Power Company, an investor-owned operating electric utility which supplies electricity to 469 communities and to rural areas in western Minnesota, eastern North Dakota, and northeastern South Dakota. The Company operates a thoroughly modern, interconnected electric system in its service territory which, incidentally, is about equal in area to the entire State of New York.

Nine steam electric generating stations supply the bulk of the electric power for Otter Tail's more than 100,000 electric customers; 5,700 miles of electric lines, principally 115,000 volts and 41,600 volts, transmit electric energy to all parts of the Otter Tail system. Since the system is an interconnected one, power generated at any one of the Company's generating stations could be used to provide service to Towner.

Not only is Otter Tail's own electric system interconnected, but it is, in turn, interconnected with the electric systems of most of the other electric suppliers in the area. The Company is part of an interconnected systems group that reaches from Montana to Florida. This provides a reservoir of power in case of emergency.

Otter Tail is continually increasing the capacity of its own steam generating plants and electric transmission lines to provide ample power for growing consumer needs. This, plus the fact that Otter Tail's system is tied to other electric systems over a considerable area, assures people in Towner that there will always be plenty of electric power for any need . . . from year to year, and in an emergency.

Otter Tail welcomes new industry to the region and tells prospective customers that there is a plentiful supply of electric power for all uses. The Company is able, willing, and will gladly provide service to customers at any economically feasible point within its service area. For further information about service connections and electric rates, prospective customers should contact:

Mr. R. E. Ferguson
District Manager
Otter Tail Power Company
Rugby, North Dakota

OR

Mr. Olaf Erickson
Service Representative
Otter Tail Power Company
Towner, North Dakota

COMMUNICATIONS

The local paper in Towner, published weekly, is the "Mouse River Farmers Press" with a circulation of 1,625. It is the official paper for McHenry County and the city of Towner. Other newspapers available locally are the "Minot Daily News," the "Fargo Forum" and the "Minneapolis Tribune."

The Towner post office is of the second class and is housed in a new attractive building. Postal receipts for 1964 were \$20,000. There are 352 lock boxes in the building, and a rural route serves 89 rural residents in the area. In addition, two daily Star routes deliver mail from Towner to points north.

Radio reception in Towner is primarily from:

| <u>Call Letters</u> | <u>Location</u> |
|---------------------|-----------------|
| KFYR | Bismarck |
| KEJB | Minot |
| KLPM | Minot |
| KGCA | Rugby |

Towner residents receive television programs from KMOT, Channel 10, and KXJB, Channel 13, both of which are located in Minot, North Dakota.

Telegraph service is available in Towner five days per week during the normal workday. However, 24-hour service is available through Rugby, North Dakota, by using the telephone. Calls to the Rugby telegraph office to send or receive messages are not toll calls.

Telephone service to Towner is provided by the Souris River Telephone Company with a district office in Minot. Local facilities serve 413 residential and 93 commercial subscribers.

Monthly rates, not including tax, are as follows:

Residential: R1 - \$5.25; R2 - \$4.75; R4 - \$4.25
Business: BI - \$9.50; B2 - \$8.50
Rural: RRM - \$5.00

TAX STRUCTURE

VALUES FOR TAX LEVY PURPOSES:

| <u>Five Years Ago (1/1/59)</u> | <u>True & Full Value</u> | <u>Taxable Value</u> |
|--------------------------------|------------------------------|----------------------|
| Real Property | \$15,344,740 | \$ 7,672,370 |
| Personal Property | 6,200,826 | 3,100,413 |
| Total | \$21,545,566 | \$10,772,783 |
| | | |
| <u>Current Year (1/1/64)</u> | | |
| Real Property | \$15,652,928 | \$ 7,826,464 |
| Personal Property | 5,069,344 | 2,534,672 |
| Total | \$20,722,272 | \$10,361,136 |

TAX RATE: (Mills)

| | <u>Five Years Ago</u> | <u>Current Year</u> |
|----------------------------------|-----------------------|---------------------|
| City of Towner | 26.00 mills | 29.85 mills |
| Newport School District No. 4 | 42.25 mills | 47.81 mills |
| McHenry County | 39.26 mills | 36.97 mills |
| State | | 3.87 mills |

BONDED INDEBTEDNESS: (City, County & School District)

| <u>Item</u> | <u>Amount</u> | <u>Date</u> |
|---|---------------------|------------------|
| Towner Fire Hall | \$ 9,000.00 | 7/1/64 |
| Newport S.D. No. 4 Erecting School & Gym | 32,700.00 | 7/1/64 |
| Newport S.D. No. 4 Completing School County | 54,000.00 - - | 7/1/64 - - |

TAX EXAMPLE:

Assume that a new 20,000 square foot building has been erected for industrial purposes. It cost \$100,000 to build and is placed on five acres of land which cost \$5,000. Real estate taxes would be computed as follows:

| | |
|-------------|--------------------------------|
| \$105,000 | Total Cost - Land and Building |
| x 25% | = Equalization Factor |
| \$ 26,250 | Assessed Value |
| x 50% | = Assessment Ratio |
| \$ 13,125 | Taxable Value |
| x 118.51 | = 1964 Mill Rate |
| \$ 1,555.14 | Tax Based on 1964 Mill Rate |

LABOR SURVEY

It is to Towner's credit that the city undertook, in late 1963 through early 1964, a labor survey.

The survey was sponsored by the Towner Industrial Development Association, conducted by the Mouse River Farmers Press, and supervised by the Towner Association of Commerce. Data was gathered from the city's trade area during a one-month period through the use of a standardized questionnaire. The primary objective was an assessment of the Towner area's labor supply with respect to local industrial development.

The main information sought was as follows:

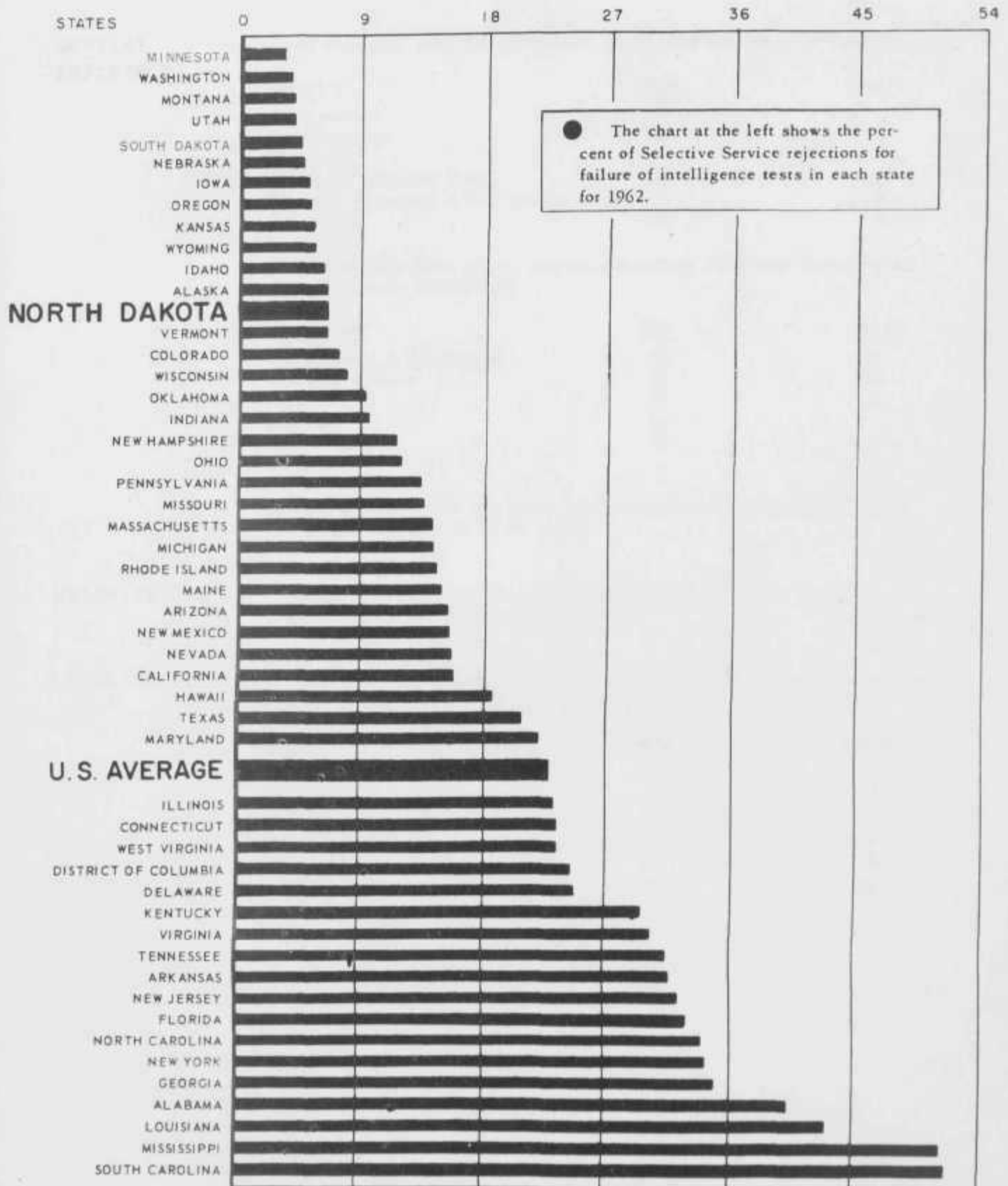
1. Personal data (sex, age, health, etc.)
2. Educational background
3. Previous employment experience
4. Unemployment record
5. Present work skills
6. Present work location
7. Work preferred
8. Times available for employment
9. Preferred work location
10. Preferred commuting distance
11. Importance attached to employment
12. Upgrading of labor status sought

Upon completion of the questionnaire phase, the data was then compiled and interpreted by the Towner Industrial Development Association. In general terms, the results revealed that an ample labor supply exists which would be sufficient to man almost any kind of new enterprise established in Towner.



NEW HOME CONSTRUCTION

NORTH DAKOTA WORKERS HAVE THE QUALIFICATIONS TO DO A GOOD JOB ● ● ● ● ●



SOURCE: STATISTICAL ABSTRACT OF THE UNITED STATES 1963.

LABOR

CURRENT EMPLOYMENT

As of mid-1964, here is the current employment in Towner by industry:

| <u>Industry</u> | <u>Male</u> | <u>Female</u> |
|----------------------------------|-------------|---------------|
| Construction | 37 | - |
| Manufacturing | 35 | 3 |
| Utilities | 3 | - |
| Wholesale & Retail Trade | 29 | 22 |
| Finance, Insurance & Real Estate | 5 | 9 |
| Government | 11 | 9 |

As of mid-1964, here is the current employment in Towner according to distribution by occupation:

| <u>Occupation</u> | <u>Male</u> | <u>Female</u> |
|---------------------------|-------------|---------------|
| Professional & Managerial | 57 | 23 |
| Clerical & Sales | 29 | 45 |
| Service | 19 | 12 |
| Skilled | 34 | - |
| Semi-skilled | 45 | - |
| Unskilled | - | - |

By age, employment in the above groups is evenly distributed throughout an age range of 24 to 64 years.

UNIONIZATION

At the present time, there are no labor unions active in Towner or the area, or in any locally-based industries.

LABOR SUPPLY

A new industry or business moving into Towner would currently expect to find employees in the following numbers:

| <u>Kind</u> | <u>Male</u> | <u>Female</u> |
|------------------|-------------|---------------|
| Clerical & Sales | 2 | 19 |
| Service | 8 | 2 |
| Skilled | - | - |
| Semi-skilled | 40 | 2 |
| Unskilled | 7 | 2 |
| Total | 57 | 25 |

**WAGE
INDICATOR
RATES**

Wages paid in the Towner area will vary according to the worker's degree of skill as well as with the individual employer's standards. The rates shown below can therefore serve only as indicators of local wage rates:

| <u>Trades</u> | <u>Hourly Wage</u> |
|-----------------------------------|--------------------------|
| Warehouse Help | \$1.25 |
| Common Labor | \$1.25 |
| Semi-skilled Labor | \$1.75 |
| Carpenters | \$2.00 - \$2.85 |
| Cement Finishers | \$2.50 |
| Bricklayers | \$2.50 |
| Plumbers | \$1.50 - \$2.75 |
| Truck Drivers | \$1.50 - \$2.00 |
| Cat Operators (Bulldozer) | \$2.80 |
| Crane Operators | \$3.00 |
| <u>Office</u> | |
| Clerks (Male) | \$1.25 (\$250 per month) |
| Clerks (Female) | \$1.25 (\$185 per month) |
| Secretaries (Female) | \$1.25 (\$200 per month) |
| Stenographers (Female) | \$1.50 (\$240 per month) |
| Typists (Female) | \$1.50 (\$240 per month) |
| <u>General Manufacturing</u> | |
| Carpenters (Maintenance) | \$2.00 - \$2.50 |
| Electricians (Maintenance) | \$3.50 |
| Helpers (Trade, Maintenance) | \$1.25 - \$1.75 |
| Machine-Tool Operators (Toolroom) | \$2.00 - \$2.25 |
| Mechanics (Maintenance) | \$1.75 - \$2.25 |
| Common Labor (Male) | \$1.25 - \$1.75 |
| Common Labor (Female) | \$1.15 |
| Laborers (Material Handling) | \$1.25 |
| Order Fillers | \$1.25 |
| Shipping Clerks | \$1.25 |
| Truck Drivers (Light Trucks) | \$1.25 |
| Truck Drivers (Medium Trucks) | \$1.25 - \$1.75 |
| Truck Drivers (Heavy Trucks) | \$2.00 |
| Truckers (Power Forklifts) | \$1.25 - \$1.75 |
| Truckers (Other) | \$1.25 - \$1.75 |

MARKET INFORMATION

RETAIL SCOPE & ESTIMATES

The estimated annual retail sales in McHenry County for 1963 are as follows:

| <u>Type of Product</u> | <u>Amount</u> |
|----------------------------------|---------------|
| Food | \$2,186,000 |
| Eat & Drink Places | 558,000 |
| General Merchandise | 614,000 |
| Apparel | 319,000 |
| Furniture & Household Appliances | 22,000 |
| Automotive | 1,745,000 |
| Gas Stations | 733,000 |
| Lumber, Building, Hardware | 2,575,000 |
| Drugs | 290,000 |

EXPANSION POTENTIAL

Towner has a number of services which presently meet a good portion of the needs of the trade area. However, possibilities for expansion do exist in the area, both in regard to products and services.

Two possibilities of particular note presently are the need for a furniture store and a shoe repair business. Information otherwise is best secured from the Towner Association of Commerce which welcomes all inquiries and will be happy to be of assistance.



FARMERS UNION ELEVATOR

PROGRESS

Progress is reflected in the number of building developments in the city. Towner has a new swimming pool, bowling lanes, high school, roller rink, railroad station, cheese store, medical center, funeral home, a fine golf course and clubhouse and a motel. Recently passed was a bond issue for a new elementary school building. Each of these reflects a good deal of effort and accomplishment on the part of the community and reflects pride and confidence in the prospects of Towner.

Equally important are the civic-minded movements that have occurred in the city. One example is the recent labor survey taken in Towner, which is an extensive effort that few cities are undertaking at present. Another example is the active promotion made by the Towner Association of Commerce which has placed Towner among the members of the Turtle Mountain Recreation Area Association, advertised the strong points of the city throughout the region and state, and played a leading role in promoting the economic development of the area. Another example is the movement towards continued community betterment, resulting in an attractive setting of well kept trees, recreation areas, landscapes, homes, etc., all of which boost the appeal of the town both to local citizens and tourists.

POTENTIAL

Future prospects for Towner and the area are promising. The area has good strong points in evidence and outstanding prospects in the making.

This is reflected in the assets of the community and area. Towner has the benefit of a good location. It is served by a prominent rail line and east-west highway and has ready access to motor and air transportation. It is the gateway to the Mouse River Loop, a region strong in agricultural production. It is in a good recreation area which includes popular nearby tourist attractions and excellent hunting, this last supported by the fine efforts of the area's wildlife refuge. Towner also has the benefit of good family accommodations. It is served by fine churches and schools. It has a number of sound recreational offerings and it has fine housing available. Towner also has good basic potential for business and industry. This includes well developed municipal facilities and in particular, a vast supply of high quality water. Also noteworthy is an ample labor force, typically composed of hard working people who display dependability, resourcefulness and productivity.

Of increased importance are the prospects held forth by irrigation. Towner, located at the hub of a large irrigable basin, can look forward to the economic stability, employment increase, production increase and similar benefits that the development of irrigation brings.

**NORTH DAKOTA
FINANCING &
TAX LAW
ADVANTAGES**

Two aspects of North Dakota law offer distinct advantages to the business or industry interested in locating in the city of Towner. Each aspect is covered below.

Municipal Industrial Development Act of 1955

This advantageous Act authorizes Towner to issue either Revenue or General Obligation bonds for financing construction of industrial buildings, purchase of real property or the improvement of both. Towner may in turn lease or sell such building or real property to the small or large enterprise engaged in any of numerous forms of production.

The sale may be either outright or on lease purchase, the city empowered to act only as the lessor. Recently the North Dakota Supreme Court ruled this law constitutional within the limits of its stated purposes. The first step in such projects consists of contact between the enterprise and the Towner Industrial Development Association.

This Act makes several advantages possible. Construction cost is reduced since the municipality can usually market its bonds at a lesser interest rate. Also, interest on municipal bonds is exempt from Federal taxes. The enterprise involved gains an added tax advantage since it is usually eligible to purchase the bonds itself. Considerable capital investment is freed for operating capital for the lessee since on a lease-purchase basis the municipality usually retains title until the bonds are retired.

Source: Ch. 40-57, North Dakota Century Code

"In Transit" Personal Property Tax Exemption

Personal property in transit through the state is exempt from taxation by law if it is goods, wares and merchandise which is:

1. Moving in interstate commerce through North Dakota, or;
2. Consigned to a warehouse or other storage facility in North Dakota from without the state for storage.

Such property is deemed to have "no situs" in the state for the purposes of taxation, and this exemption is not lost if the property is assembled, processed, or repackaged and relabeled. Thus, an industry engaged in the processing, mixing, cleaning or repackaging of material from outside North Dakota, and whose major sales are outside North Dakota, would be assured of tax exemption for its process inventory.

Source: Sec. 57-02-42, North Dakota Century Code

NOTE: For complete information on both above aspects, contact: Director, Economic Development Commission, State Capitol, Bismarck, North Dakota.

INDUSTRIAL DEVELOPMENT

EXISTING INDUSTRY ATTITUDE

The existing industries in Towner report satisfaction with all circumstances which have a bearing upon their prospects in the city and area. Conditions justify their remaining in the community and seeking expansion as opportunities arise.

INDUSTRIAL DEVELOPMENT ASSOCIATION

The local development group, the Towner Industrial Development Association, exhibits ready evidence of its positive attitude towards prospects in Towner. This group has played a major role in community development to date. The group not only sponsored the labor survey but also, over just the past year, was instrumental in effecting the expansion that took place in two local businesses.

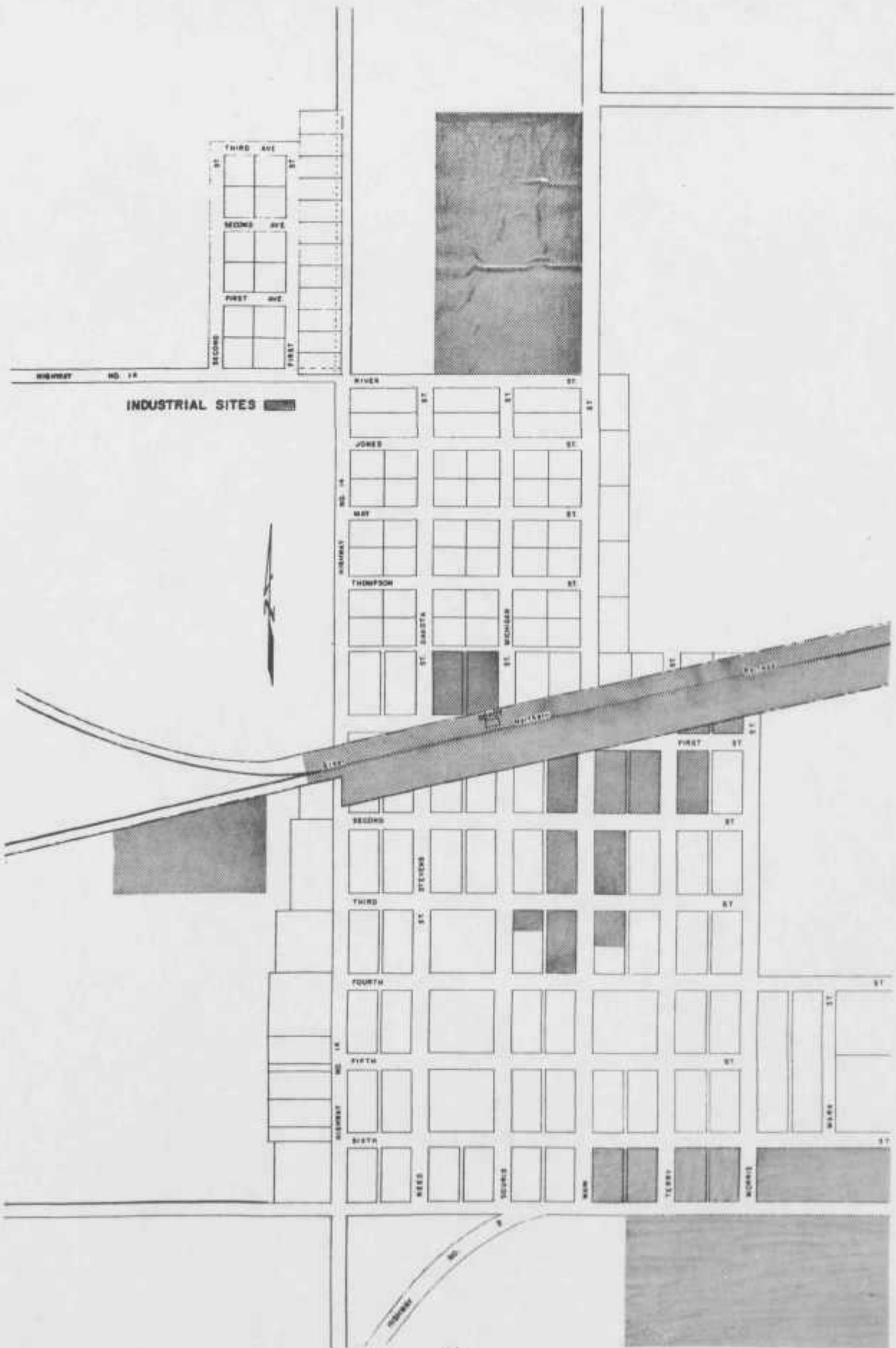
The Association is firmly convinced that any small industry will find its needs met in Towner. If there are accommodations required that are not presently available, the Association will make every effort to expand its facilities to meet those needs.

Information on specific developmental possibilities, available buildings and sites, financial assistance and similar matters of concern may be obtained by contacting Hayden H. Thompson, President, Towner Industrial Development Association.

EXISTING MANUFACTURERS

Existing industries located in Towner as of 1965 are:

| <u>Name</u> | <u>Product</u> | <u>Market</u> | <u>Average Maximum Employment</u> |
|------------------------------------|------------------------------|------------------|---------------------------------------|
| Gunter Brothers | Honey | Regional | 4 |
| Winger Cheese, Inc. | Cheese | Local - National | 15 |
| Wood Preserving & Products Co. | Treated Wood Products | Local - National | 6 |
| Towner Lumber Co. | Homes (Local & Move-away) | Local - Regional | 25 |
| Towner Nursery (Non-commercial) | Trees & Shrubs | Regional | 40 |



F
644
.T6
T68
1965