



Welcome to
VELVA

NORTH DAKOTA
STATE LIBRARY
Bismarck, N. D. 58501

North Dakota





THIS BROCHURE IS A COMBINED EFFORT OF VELVA'S ASSOCIATION OF COMMERCE, COMMUNITY DEVELOPMENT CORPORATION, AND OTTER TAIL POWER COMPANY. INQUIRIES DIRECTED TO ANY OF THESE THREE ORGANIZATIONS AT VELVA, NORTH DAKOTA, WILL RECEIVE PROMPT ATTENTION.

NORTH DAKOTA
BOOK OR AUTHOR

NORTH DAKOTA STATE LIBRARY
3 3105 00040 4812

DATE DUE MAY NOT BE RENEWED

MAY 21 1975

JE 376

MAY 26 1977

SEP 6 1982

Velva

1983-84
GRAND PRIZE
AWARD WINNER
NORTH DAKOTA
COMMUNITY IMPROVEMENT PROGRAM

F
644
.V45
V4x
Welcome to Velva,
North Dakota.

F
644
.V45
V4x
Welcome to Velva, North
Dakota.

NORTH DAKOTA STATE LIBRARY
BISMARCK 58501



MAR 14 1975

North Dakota State Library
Bismarck, ND 58501

VELVA, NORTH DAKOTA, HAS A POPULATION OF ALMOST 1,300.

LOCATED ON THE BANKS OF THE MOUSE RIVER IN NORTH CENTRAL NORTH DAKOTA, VELVA IS ON U.S. HIGHWAY 52 AND NORTH DAKOTA STATE HIGHWAY 41. IT IS ON THE MAIN LINE OF THE SOO LINE RAILROAD.

VELVA IS SITUATED 20 MILES EAST OF MINOT-NORTH DAKOTA'S FOURTH LARGEST CITY WITH A POPULATION OF 32,000.



THE AREA HAS A 122 DAY GROWING SEASON. AVERAGE ANNUAL PRECIPITATION IS 16.47 INCHES OF WHICH 8.21 INCHES OCCURS DURING THE GROWING SEASON. ANNUAL AVERAGE SNOWFALL IS 38.2 INCHES.

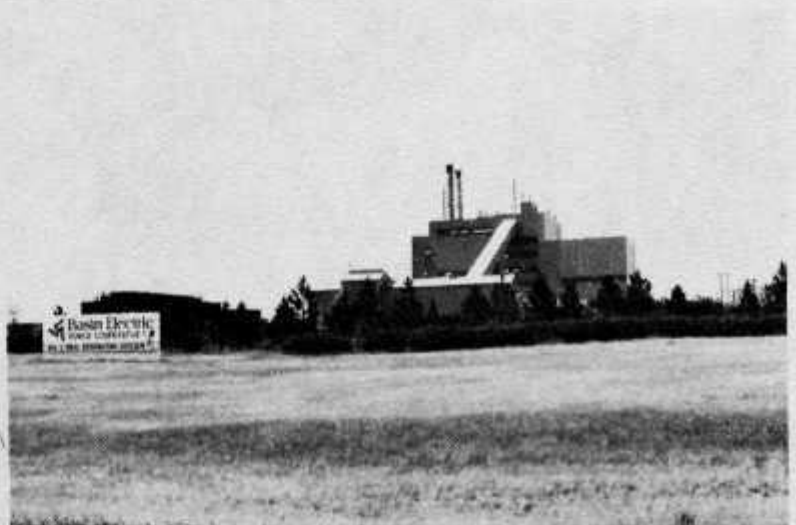
JANUARY, THE COLDEST MONTH, HAS MEAN DAILY MAXIMUM TEMPERATURE OF 19F AND MEAN DAILY MINIMUM OF -2F. THE HOTTEST MONTH IS JULY WITH A MEAN DAILY MAXIMUM OF 83F AND MEAN DAILY MINIMUM OF 57F.

VELVA HAS ALMOST 60 RETAIL FIRMS, MANY AGRICULTURALLY RELATED, SINCE FARMING OPERATIONS ARE THE BACKBONE OF THE AREA'S ECONOMY.



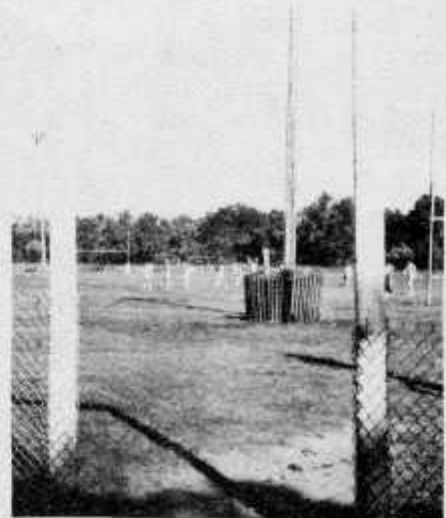
THE PEOPLES STATE BANK OF VELVA HAS TOTAL ASSETS OF ALMOST \$5,000,000 AND TOTAL DEPOSITS OF ALMOST \$4,000,000.

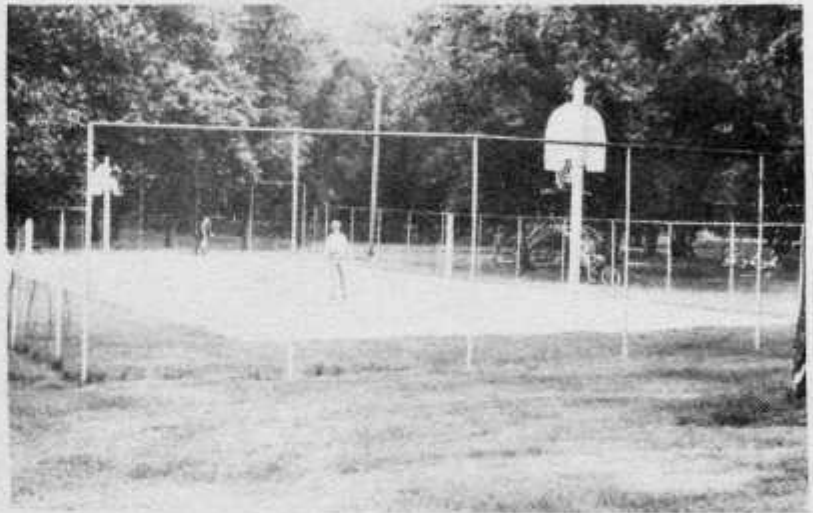
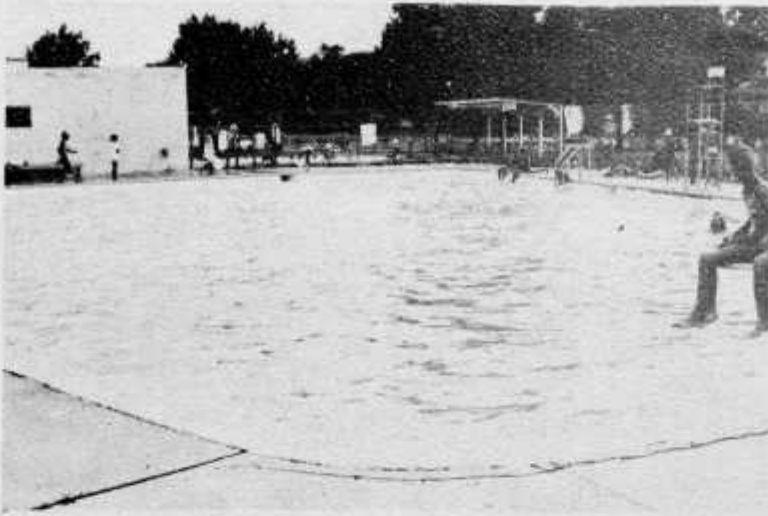
MAJOR EMPLOYERS IN THE VELVA AREA INCLUDE CONSOLIDATION COAL COMPANY (RIGHT), A NEARBY LIGNITE COAL MINING OPERATION; VERENDRYE ELECTRIC COOPERATIVE (BELOW) HEADQUARTERED IN VELVA SERVES 5,000 SQUARE MILES OF RURAL NORTH DAKOTA; AND BASIN ELECTRIC POWER COOPERATIVE WHICH OPERATES A GENERATING PLANT (BELOW RIGHT) THREE MILES FROM THE CITY.



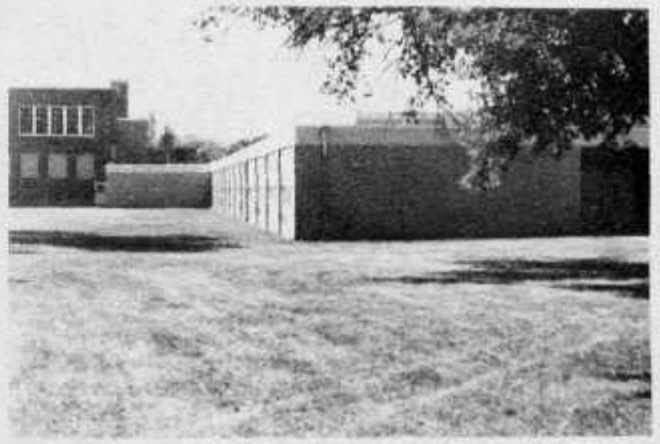
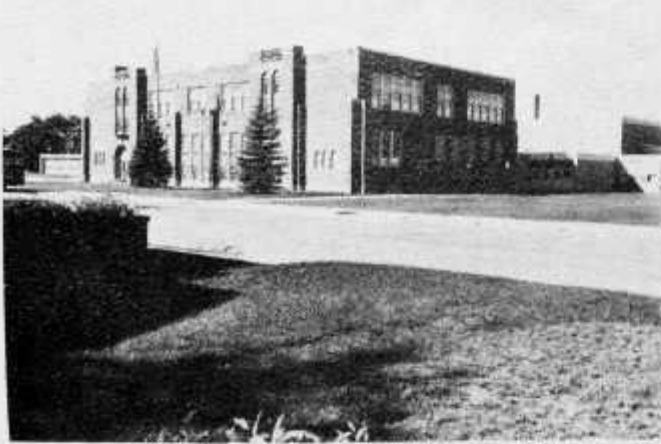
RECREATION

IN ADDITION TO THE COMPLETE RANGE OF RECREATION SUMMER AND WINTER, VELVA ALSO HOSTS ANNUAL EVENTS WHICH INCLUDE THE FOURTH OF JULY CELEBRATION AND PARADE, LIONS CLUB HORSE SHOW, LABOR DAY JUNIOR HORSE SHOW, AND THE FALL FESTIVAL.





WILDWOOD PARK IS A 29 ACRE WILD AREA BORDERING THE RIVER, SET ASIDE BY THE CITY FOR A BIRD SANCTUARY WITH NATURE TRAILS, THE ONLY SUCH SANCTUARY IN THE STATE.



VELVA'S PUBLIC SCHOOL SYSTEM HAS AN ENROLLMENT OF ALMOST 600 STUDENTS. A BUILDING PROGRAM OVER THE YEARS HAS KEPT PACE WITH DEMANDS AND THE SCHOOL PLANT NOW ENCOMPASSES TWO CITY BLOCKS. MINOT STATE COLLEGE IS 20 MILES DISTANCE, OFFERING OUTSTANDING LIBERAL ARTS COURSES. ALSO LOCATED IN MINOT ARE A BUSINESS COLLEGE, A BEAUTY SCHOOL, AND A VOCATIONAL REHABILITATION CENTER.



ST. CECILIA'S CATHOLIC CHURCH



OAK VALLEY LUTHERAN CHURCH



CHURCH OF GOD



METHODIST CHURCH



NAZARENE CHURCH



VELVA MEDICAL CENTER IS STAFFED BY A FAMILY PHYSICIAN AND A DENTIST. TWO OF NORTH DAKOTA'S FINEST HOSPITALS ARE 20 MILES DISTANT AT MINOT.



MORE THAN 70 PER CENT OF THE HOMES ON VELVA'S TREE LINED STREETS ARE OWNER-OCCUPIED. THE CITY HAS FOUR MOBILE HOME PARKS, HOTEL BERRY AND THE KO-Z MOTEL.



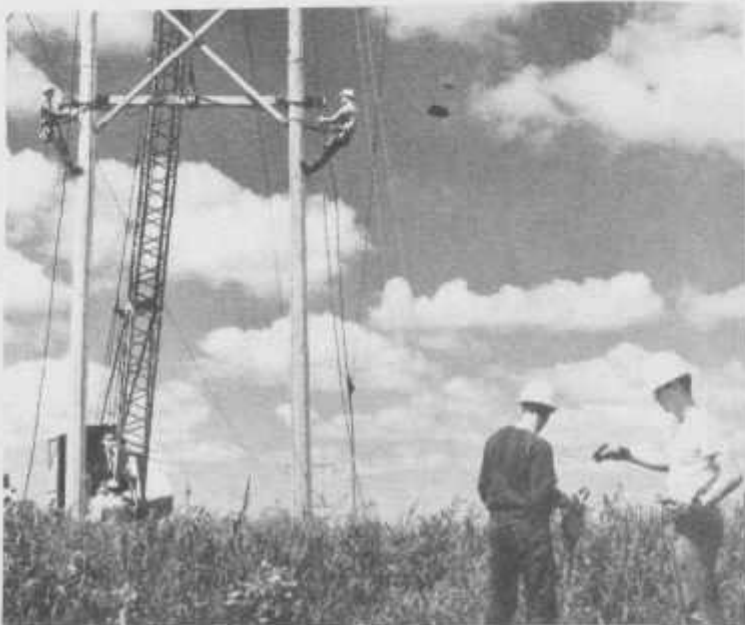
THE WEEKLY MCHENRY COUNTY JOURNAL-REGISTER HAS 2,500 SUBSCRIBERS. USING AN OFF-SET PRESS, OTHER MODERN EQUIPMENT INCLUDES THIS COMPUWRITER.

THE MINOT DAILY NEWS AND THE FARGO FORUM ARE AVAILABLE LOCALLY EVERY DAY.

ALL THREE MAJOR NETWORKS ARE REPRESENTED BY THREE RADIO STATIONS AND TWO TELEVISION STATIONS LOCATED IN MINOT. RECEPTION IN VELVA IS EXCELLENT.



NORTHWESTERN BELL TELEPHONE COMPANY PROVIDES PHONE SERVICE. A LOCAL SERVICE MAN IS ON CALL 24 HOURS A DAY.



VELVA IS SERVED ELECTRICALLY BY OTTER TAIL POWER COMPANY, AN INVESTOR-OWNED UTILITY WHICH PROVIDES POWER TO 465 COMMUNITIES IN NORTH DAKOTA, WESTERN MINNESOTA, AND NORTH EASTERN SOUTH DAKOTA. OTTER TAIL WELCOMES NEW INDUSTRY AND NEW RESIDENTS TO THE AREA AND ASSURES PROSPECTIVE VELVA CUSTOMERS AMPLE ELECTRIC PWER FOR ALL USES. A RESIDENT SERVICE REPRESENTATIVE AND A THREE-MAN AREA LINE CREW ARE ON CALL AROUND THE CLOCK.



THE WORLD WAR MEMORIAL BUILDING HOUSES CITY OFFICES, POLICE DEPARTMENT, AND FIRE DEPARTMENT.



**POST OFFICE
VELVA, NORTH DAKOTA 58790**



SOIL CONSERVATION OFFICES FOR THE SOUTH MCHENRY COUNTY DISTRICT.

Velva...

THE GOOD LIFE





VELVA COMMUNITY DEVELOPMENT CORPORATION

VELVA, NORTH DAKOTA

Greetings!

Velva, the Star City, was so named because it lies at the southernmost point of the Mouse River loop, as the river turns and begins its way northward to Canada, its point of origin.

Nestled among the oaks of the valley, is the city of Velva, a community of 1,300 people who readily attest to the great "Quality of Life" found here. A tour through the residential areas with their well kept lawns, homes, gardens and flower plantings indicates very well, that here live 1,300 people who are also very proud of their property, their city, their community.

We have a beautiful large park, the perfect setting for our athletic fields, playground, camping and picnic areas, and a well rounded, supervised recreation program. Velva also has an olympic-size heated swimming pool, which is used extensively by the entire community.

Velva's city government provides all services and facilities necessary for a progressive, modern community, but maintains a very modest tax rate. This fact, along with our pleasant surroundings, has enabled Velva to remain a strong business center, serving a large area.

Our proximity to Minot enables everyone in our city to have all the services of fine hospitals, colleges, airlines, railroads and many other valuable resources available to them within minutes.

We are very proud of our fine medical center, educational system, churches, senior citizens program, youth activities and civic groups, all working together and contributing to a better community.

We invite you to visit us for a day, a week, a year or a lifetime. You'll like it here!

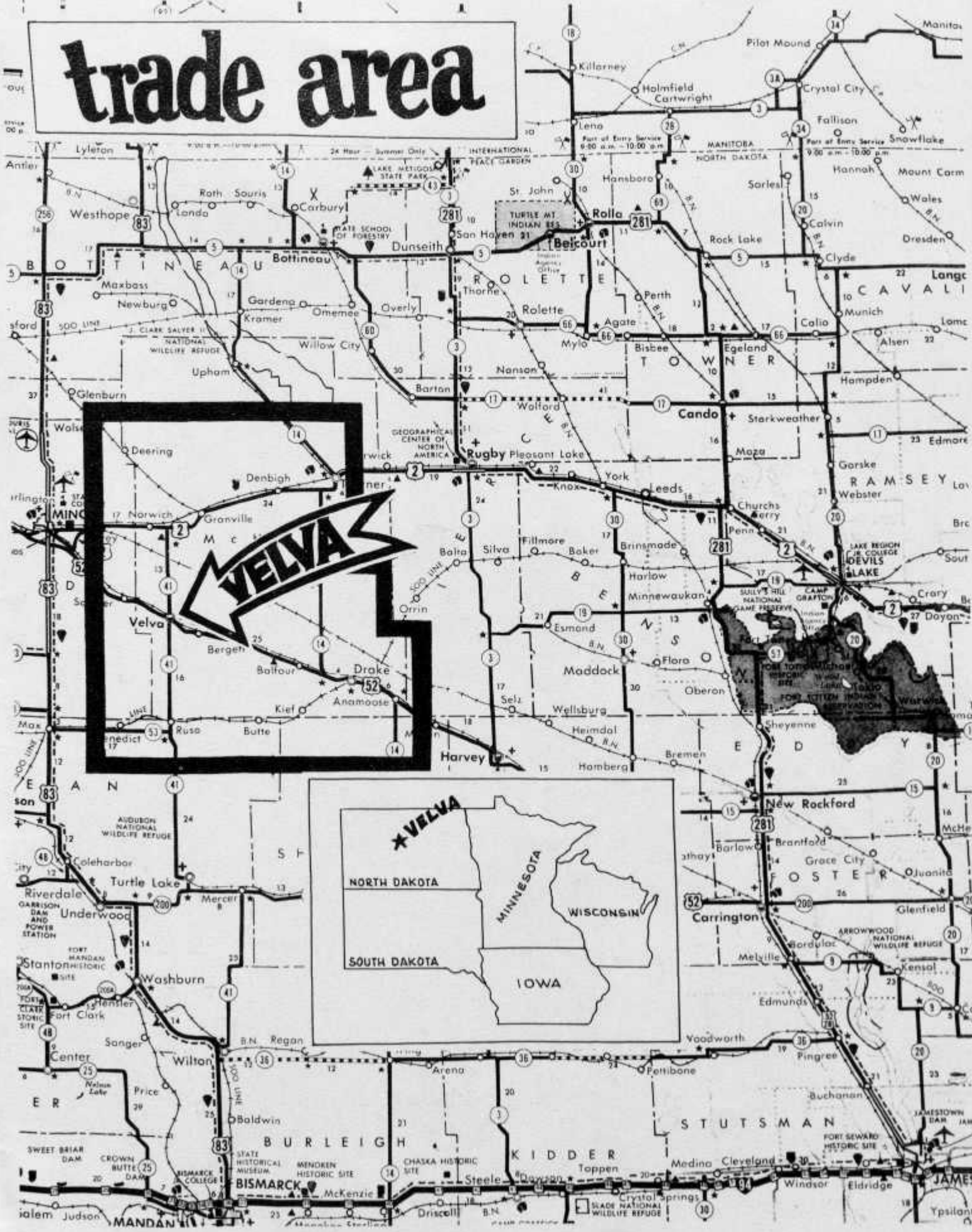
Very truly yours,

A handwritten signature in cursive script that reads "Carl A. Loftnes".

Carl A. Loftnes, President

Velva Community Development Corporation

trade area



Printed By The Journal-Register

Velva, North Dakota 58790

October, 1974

F
644
.V4
V45
1974